




Climatic Bulletin

May 2011

 Max
temperature

 Min
temperature

 Mean
temperature

 Precipitation

 Sunshine
duration



May gave a lot of rainfalls and thunderstorms occasionally over most parts of Greece .
Nevertheless a barometric low, which affected Eastern and Southern parts for the three days period 18-20/5, caused locally strong thunderstorms with hail.
Also, similar phenomena affected Crete during the last days. .
The alternation of Northern and Southern was one of the reasons of rapid decrease and increase of temperature.



ΕΘΝΙΚΗ
ΜΕΤΕΩΡΟΛΟΓΙΚΗ
ΥΠΗΡΕΣΙΑ

HELLENIC NATIONAL METEOROLOGICAL SERVICE



Temperature

First Decameron

Minimum: the values declined rapidly between 5/5 and 8/5.

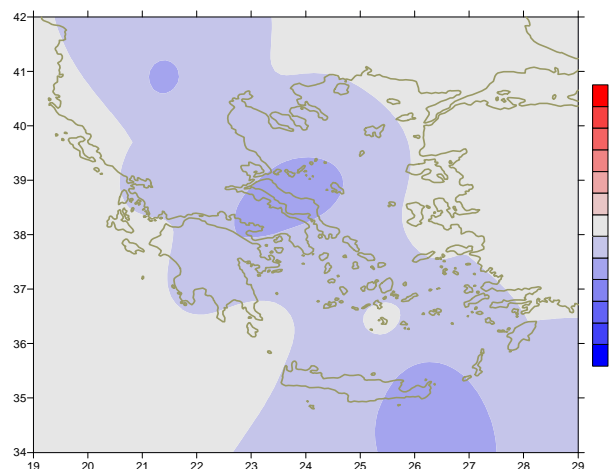
More specific (the lowest):

2.6°C in Kastoria, 4.2°C in Alexandroupoli (7/5) and 3.6°C in Florina, 4.2°C in Tripoli (8/5).

Maximum: high values which declined mainly over Aegean area at the end.

More specific:

30.2°C in Souda, 24.8°C in Naxos and 23.2°C in Syros at 3/5 but respectively 17.8°C , 17.4°C and 18.2°C at 7/5.



Deviation of mean temperature from normal values

Second Decameron

Minimum: relatively low values at the beginning and at the end.

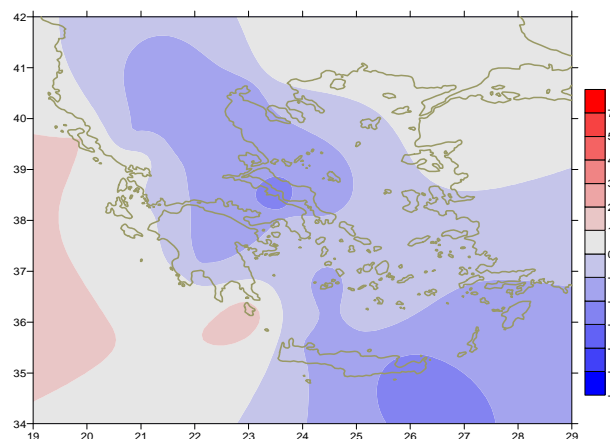
More specific (the lowest):

5°C in Florina, 5.4°C in Tripoli, 6.6°C in Kastoria at 20/5.

Maximum: low values which raised at the end.

More specific:

19.6°C (11/5), 24°C (20/5) in Limnos, 15.6°C (11/5), 20.1°C (20/5) in Sitia, 19.4°C (11/5), 23.4°C (20/5) in Kos.



Deviation of maximum temperature from normal values

Third Decameron

Minimum: the values were high in the middle.

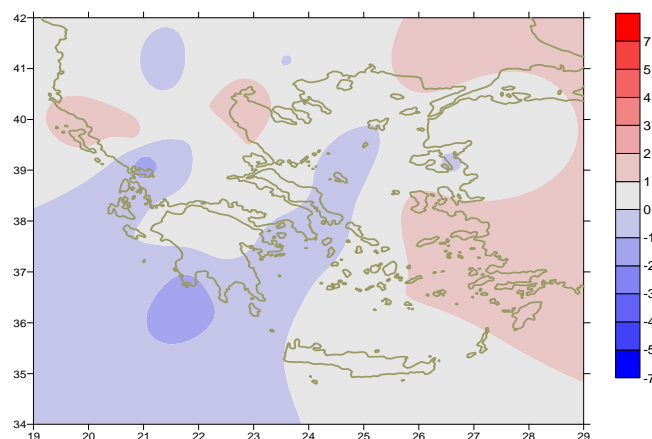
More specific (from the highest):

20°C in Ioannina, 22.6°C in Karpathos at 26/5, 20.6°C in Samos and 20.4°C in Rodos at 27/5.

Maximum: high values for the period 24-26/5.

For example:

in Trikala Imathias 32°C , in Arta 32°C at 24/5, in Serres 31°C , in Arta 32.2°C at 26/5.



Deviation of minimum temperature from normal values



Precipitation

First Decameron

Remarkable precipitation amounts mainly at 5/5.

More specific:

59mm in Thessaloniki,

44mm in Skiathos and 34mm in Serres at 5/5.

Second Decameron

Very high precipitation amounts over eastern
and southern parts.

More specific:

*58mm in Naxos, 40mm in Sitia, 30mm in Paros
and 24mm in Limnos at 19/5.*

Third Decameron

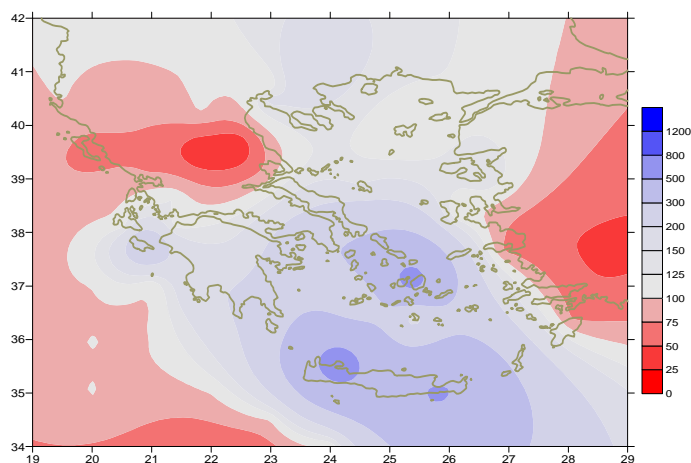
Very high precipitation amounts recorded over most parts
after 26/5.

More specific:

57mm in Souda (27/5), 40mm in Iraklion (28/5).

23mm in Kozani (29/5)

and 33mm in Kos (30/5).



*Deviation of monthly precipitation
height from normal values (%)*

TABLE OF MEAN VALUES

STATION	Longitude	Lattitude	Tmean	TX	TN	RR	INST
SERRES	23,53	41,07	19,6	25,9	12,4	93	233
FLORINA	21,40	40,78	15,7	19,9	8,6	96	
KASTORIA	21,27	40,45	15,7	21,1	8,3	65	238
TRIKALA_IMATHIAS	22,55	40,60	19,8	25,4	13,7	40	251
THESSALONIKI	22,97	40,52	19	22,9	13,3	71	254
CHRYSOUPOLI	24,62	40,92	18,8	22,2	13,6	37	238
ALEXANDROUPOLI	25,95	40,85	18,8	23,1	12,5	45	273
KOZANI	21,83	40,28	16,5	20,6	10,3	59	
KERKYRA	19,92	39,62	20,4	24,8	14,2	25	290
IOANNINA	20,82	39,70	17,4	22,3	10,8	48	235
PREVEZA	20,76	38,91	19,6	24,1	14,7	51	
TRIKALA_THESSALIAS	21,77	39,52					
LARISA	22,45	39,65	19,4	24,6	11,6	11	244
LIMNOS	25,23	39,92	18	21,6	12,8	23	302
ARTA	21,00	39,17	19,5	25,6	12,5	38	203
AGHIALOS	22,78	39,21	18,9	22,8	12,9	25	251
MYTILINI	26,60	39,05	20,5	24,4	15	32	317
VELO	22,77	37,97	20,2	23,8	14,5	37	272
AGRINIO	21,35	38,60	19,8	25,4	11,9	59	258
LAMIA	22,43	38,87	19,4	25,2	12,6	68	211
ANDRAVIDA	21,28	37,92	19,6	24,1	13,2	14	274
SKYROS	24,48	38,96	18,1	20,5	14,7	25	264
ARGOSTOLI	20,50	38,12	19,7	22,9	14,1	22	311
ARAXOS	21,42	38,15	20	23,9	13,7	21	287
TANAGRA	23,57	38,33	18,3	22,5	11,7	43	257
HIOS	26,13	38,35	19,8	22,3	14,9	12	300
PYRGOS	21,42	37,67	20	24,3	13,1	26	244
TRIPOLI	22,40	37,52	16	21,1	8,8	59	261
TATOI	23,78	38,10	18,4	22,2	12,9	61	
HELLINIKO	23,73	37,90	20,2	23,7	14,8	43	298
ELEYSINA	23,55	38,07	20,4	24,3	15	20	
ZAKYNTHOS	20,88	37,75	20,4	24	14,5	51	305
SAMOS	26,92	37,68	20,5	23,8	15,7	11	
ARGOS	22,75	37,63					
KALAMATA	22,02	37,07	19,2	23,5	11,6	44	274
NAXOS	25,37	37,10	19,1	21,5	16	59	326
METHONI	21,70	36,82	19	22,3	13,6	26	285
MHLOS	24,43	36,73					
SPATA	23,95	37,95	17,9	22,4	12,4	13	
KOS	27,08	36,80	19,5	22,7	16,2	5	
KYTHIRA	22,98	36,15					
SANTORINI	25,41	36,41	19,5	21,9	16,7	10	306
SOUDA	24,12	35,55	19,5	23,2	15,1	82	298
RODOS	28,08	36,40	20,5	23,1	17,1	10	300
MYKONOS	25,35	37,43	18	20,6	16,1	5	
HERAKLEIO	25,18	35,33	19,6	22,2	15	56	300
IERAPETRA	25,73	35,02					
SITEIA	26,10	35,21	18,8	21,6	15,7	63	299
RETHYMNO	24,50	35,36					
TYMPAKI	24,76	35,06	20,3	23,9	13,9	4	318
KASTELI	25,33	35,18	17,4	21,3	12,7	67	271
KARPATOS	27,15	35,42	19,6	22,1	17,6	57	
PAROS	25,13	37,02	19,3	22,3	15,6	30	323
SYROS	24,95	37,42	18,9	21,6	15,9	20	335
IKARIA	26,35	37,68	18,5	20,2	16,8	10	

Climatic Bulletin

General Description

Precipitation amounts were quite higher than normal values over parts of Macedonia, Peloponnese but mainly over Central and South Aegean and Crete.
In contrast, they were lower than normals over most parts of Central mainland.
The mean temperature varied lower than normal values almost everywhere and mainly over eastern Crete and parts of eastern Sterea-Evia.

Climatic Parameters :

- ❖ **Normal Values** : normal values for various parameters (temperature, precipitation, etc) are defined as mean values calculated for 30 years. These normal values are used as basis and represent the mean situation. They can be specified in 10 daily, monthly, seasonally and yearly level and are used for the trend comparison of 10 days, month, season or year as: rainy decameron, mild winter, cool August etc.

Measurement :

- ❖ **Precipitation**
1 mm = 1 litre/m²

Table Legend :

Tmean : Mean Temperature
TN : Minimum Temperature
TX : Maximum Temperature
RR : Precipitation height(mm)
INST : Sun Duration (hours)

UTC hours (Universal Time Coordinates) in Greece :

- ❖ Winter : UTC hour = local hour - 2
- ❖ Summer : UTC hour = local hour - 3

© Hellenic National Meteorological Service
Reproduction is prohibited without written authorization
14 El.Venizelou 16777
Helliniko, Athens
Greece