




# Climatic Bulletin

December 2011

 **Max  
temperature**

 **Min  
temperature**

 **Mean  
temperature**

 **Precipitation**

 **Sunshine  
duration**



December was a warm month until the third decameron but an extremely cold one during last six days. Heavy snowfalls recorded on the mountains but in the plains of Western-central Macedonia as well. Also, total frost conditions prevailed locally in Northwestern mainland. For instance in the town of Florina the temperature remained below zero for three days, continuously.



## Temperature

### First Decameron

**Minimum:** high values even over Northern mainland at the beginning.

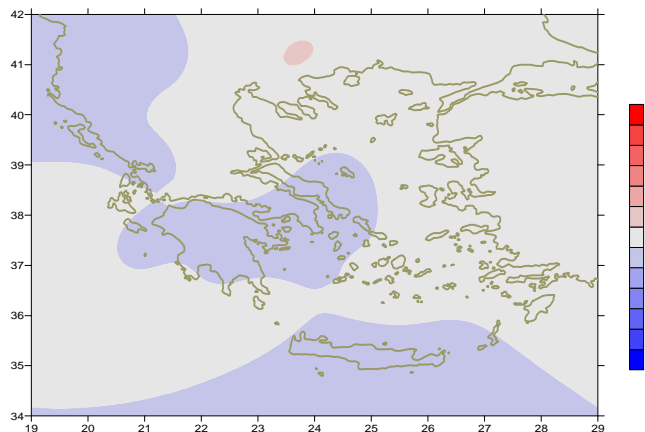
More specific:

$6.2^{\circ}\text{C}$  in Edessa,  
 $17^{\circ}\text{C}$  in Preveza and  $17.8^{\circ}\text{C}$  in Leros at 6/12.

**Maximum:** High values at the same period.

More specific:

$23.2^{\circ}\text{C}$  in Lamia,  $22.6^{\circ}\text{C}$  in Volos,  
 $20.8^{\circ}\text{C}$  in Hellinikon at 6/12.



*Deviation of mean temperature from normal values*

### Second Decameron

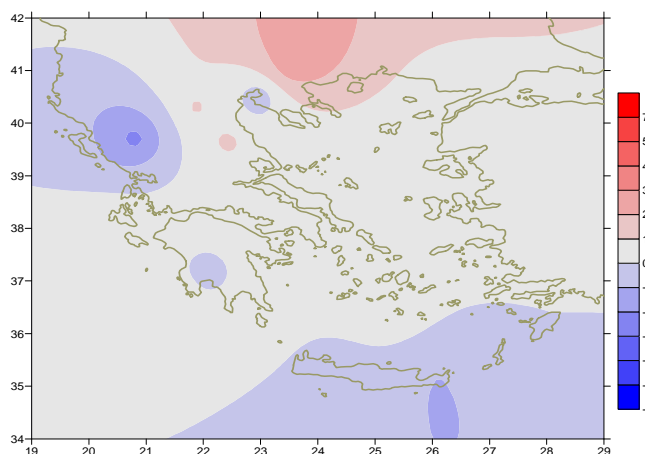
**Minimum:** high values over Northern mainland at 12/12 and from 16 to 20/12.

More specific:  $+4.2^{\circ}\text{C}$  in Florina,  
 $+10.4^{\circ}\text{C}$  in Alexandroupoli at 12/12.

**Maximum:** relatively high mainly at the beginning.

More specific:

$20.8^{\circ}\text{C}$  in Argos and  $20.2^{\circ}\text{C}$  in Hellinikon at 12/12.  
 $21^{\circ}\text{C}$  in Elefsina,  $20.1^{\circ}\text{C}$  in Spata (airport) at 17/12.



*Deviation of maximum temperature from normal values*

### Third Decameron

**Minimum:** very low values from the middle of the period.

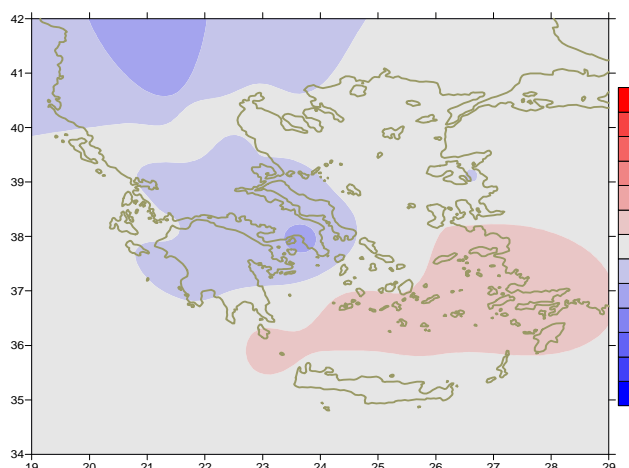
More specific:

$-18.6^{\circ}\text{C}$  in Florina (25/12),  
 $-9^{\circ}\text{C}$  in Kastoria (25/12),  
 $+2^{\circ}\text{C}$  in Hellinikon (29/12).

**Maximum:** very low values (total frost) at the end over NW mainland.

For example (from the lowest max temperatures):

$-4^{\circ}\text{C}$  in Florina at 28/12,  
 $-5.9^{\circ}\text{C}$  at 29/12,  
 $-6.4^{\circ}\text{C}$  at 30/12.



*Deviation of minimum temperature from normal values*



## P r e c i p i t a t i o n

### First Decameron

Remarkable precipitation amounts mainly over

West parts and eastern Aegean.

More specific:

*51mm in Kerkyra at 4/12,*

*37mm in Kalamata at 7/12, 47mm in Samos at 7/12.*

### Second Decameron

Very high precipitation amounts (rainfalls ,thunderstorms, snowfalls over mountains) mainly between 18 and 20/12.

More specific:

*45mm in Skyros at 18/12,*

*66mm in Alexandroupoli at 19/12,*

*56mm in Limnos at 19/12 ,38mm in Preveza at 20/12.*

### Third Decameron

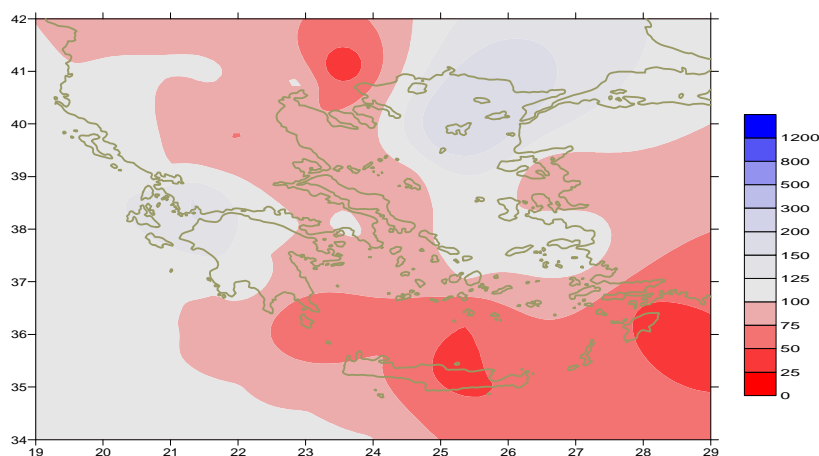
Very high precipitation amounts ( rainfalls ,thunderstorms, heavy snowfalls over mountains and in the plains of West Macedonia.)

More specific:

*80mm in Agrinio, 52mm Andravida at 22/12,*

*43mm in Naxos at 23/12,*

*56mm in Rodos at 31/12.*



*Deviation of monthly precipitation height from normal values (%)*

TABLE OF MEAN VALUES

STATION	Longitude	Lattitude	Tmean	TX	TN	RR	INST
SERRES	23,53	41,07	6	12,1	0,5	4	27
FLORINA	21,40	40,78	1,6	7	-3,4	18	
KASTORIA	21,27	40,45	2,7	8,3	-2,9	48	93
TRIKALA_IMATHIAS	22,55	40,60					
THESSALONIKI	22,97	40,52	6,7	10,2	3	43	121
CHRYSOUPOLI	24,62	40,92	7,3	11,6	3,3	74	130
ALEXANDROUPOLI	25,95	40,85	7,6	11,3	4	138	117
KOZANI	21,83	40,28	4,6	8,9	0,7	42	
KERKYRA	19,92	39,62	10,9	14,7	6,9	216	100
IOANNINA	20,82	39,70	5,7	9,1	2,1	161	71
PREVEZA	20,76	38,91	11,4	14,6	8,8	183	
TRIKALA_THESSALIAS	21,77	39,52					
LARISA	22,45	39,65	6,8	12,1	1,6	34	116
LIMNOS	25,23	39,92	9,9	13	6,7	161	122
ARTA	21,00	39,17					
AGHIALOS	22,78	39,21	8,4	13,1	4,4	41	116
MYTILINI	26,60	39,05	11,5	14,8	8,6	94	141
VELO	22,77	37,97					
AGRINIO	21,35	38,60	9,5	15,1	4,7	233	122
LAMIA	22,43	38,87					
ANDRAVIDA	21,28	37,92	11,4	15,7	7,4	206	120
SKYROS	24,48	38,96	11,5	14,1	9,5	66	124
ARGOSTOLI	20,50	38,12	13,5	16,5	10,6	156	121
ARAXOS	21,42	38,15	11,5	15,6	7,7	194	131
TANAGRA	23,57	38,33					
HIOS	26,13	38,35	11,4	14,8	8,3	114	126
PYRGOS	21,42	37,67	12	16,6	7,9	266	83
TRIPOLI	22,40	37,52					
TATOI	23,78	38,10	9	13,7	5	116	
HELLINIKO	23,73	37,90	11,8	16	7,5	63	122
ELEYSINA	23,55	38,07	10,7	15,3	6,8	58	
ZAKYNTHOS	20,88	37,75	12,4	16	9,5	186	115
SAMOS	26,92	37,68	12,2	15,4	10,1	174	
ARGOS	22,75	37,63					
KALAMATA	22,02	37,07	11,3	16,3	7	176	131
NAXOS	25,37	37,10	13,8	16,1	11,6	72	106
METHONI	21,70	36,82	13,2	11,4	6,9	128	155
MHLOS	24,43	36,73					
SPATA	23,95	37,95	10,8	15,2	5,9	60	
KOS	27,08	36,80	12,6	15,1	10,6	89	
KYTHIRA	22,98	36,15					
SANTORINI	25,41	36,41	13,6	15,6	12,1	21	143
SOUDA	24,12	35,55	12,5	15,7	10,1	65	124
RODOS	28,08	36,40	13,9	16,6	11,5	62	137
MYKONOS	25,35	37,43	12,6	14,5	11,2	57	
HERAKLEIO	25,18	35,33	13,2	16,7	10,9	30	135
IERAPETRA	25,73	35,02					
SITEIA	26,10	35,21	13,4	16,3	11,5	56	150
RETHYMNO	24,50	35,36					
TYMPAKI	24,76	35,06	13,3	17,7	8,9	88	156
KASTELI	25,33	35,18	10,3	14,3	7,3	90	147
KARPATOS	27,15	35,42	14,5	17	12,6	21	
PAROS	25,13	37,02	13,3	15,9	11,4	42	138
SYROS	24,95	37,42	13,1	15,8	11,1	77	154
IKARIA	26,35	37,68	14,1	15,6	12,6	153	

# Climatic Bulletin

## General Description

Precipitation amounts were slightly higher than normal values over most parts of Greece.

The mean temperature varied lower than normal values only over northwestern parts, over Peloponnese and locally over southern Aegean area).

### Climatic Parameters :

- ❖ **Normal Values** : normal values for various parameters (temperature, precipitation, etc) are defined as mean values calculated for 30 years. These normal values are used as basis and represent the mean situation. They can be specified in 10 daily, monthly, seasonally and yearly level and are used for the trend comparison of 10 days, month, season or year as: rainy decameron, mild winter, cool August etc.

### Measurement :

- ❖ **Precipitation**  
1 mm = 1 litre/m<sup>2</sup>

### Table Legend :

Tmean : Mean Temperature  
 TN : Minimum Temperature  
 TX : Maximum Temperature  
 RR : Precipitation height(mm)  
 INST : Sun Duration (hours)

### UTC hours (Universal Time Coordinates) in Greece :

- ❖ Winter : UTC hour = local hour - 2
- ❖ Summer : UTC hour = local hour - 3

© Hellenic National Meteorological Service  
 Reproduction is prohibited without written authorization  
 14 El.Venizelou 16777  
 Helliniko, Athens  
 Greece