



Climatic Bulletin

January 2012

 Max
temperature

 Min
temperature

 Mean
temperature

 Precipitation

 Sunshine
duration



January characterized by extremely low temperatures (mainly over Northwest parts where several records were broken), by strong frost over North and Central mainland and by long snowfalls. Also, heavy rainfalls and hails recorded over southern parts while gale force winds prevailed from time to time.



ΕΘΝΙΚΗ
ΜΕΤΕΩΡΟΛΟΓΙΚΗ
ΥΠΗΡΕΣΙΑ

HELLENIC NATIONAL METEOROLOGICAL SERVICE



Temperature

First Decameron

Minimum: the lowest values over Northwestern mainland.

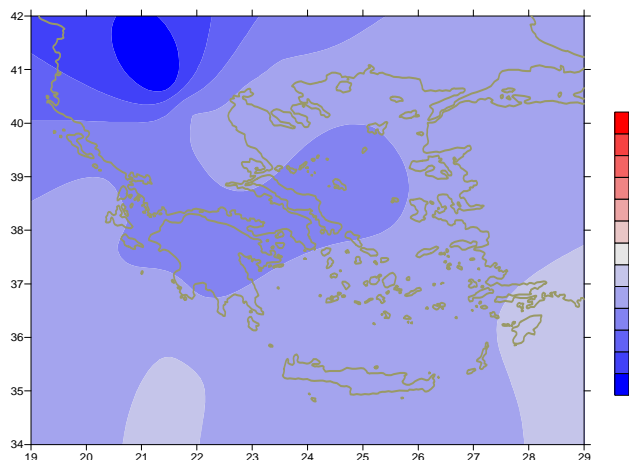
More specific:

-17.8°C in Florina and -12.3°C in Kastoria at 2/1.

Maximum: significant variation of values.

More specific:

over Northern parts from -2°C to $+13^{\circ}\text{C}$,
over Central parts from $+7^{\circ}\text{C}$ to $+14^{\circ}\text{C}$,
over Southern parts from $+9^{\circ}\text{C}$ to $+17^{\circ}\text{C}$.



Deviation of mean temperature from normal values

Second Decameron

Minimum: extremely low values-records were broken over Northern mainland.

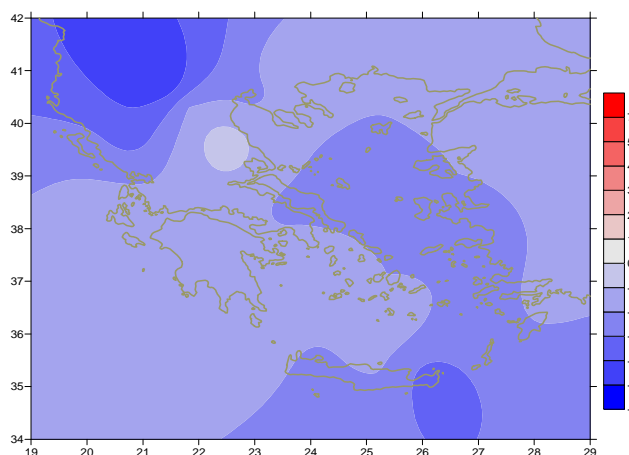
More specific:

-25.1°C in Florina at 17/1 and 18/1,
 -5.6°C in Kerkira at 18/1.

Maximum: locally total frost over NW mainland but the values rose everywhere at the end.

More specific:

in Florina (the strongest and longest frost conditions)
minimum -25.1°C , maximum -11.6°C (17/1),
minimum -25.1°C , maximum -10°C (18/1),
minimum -24.2°C , maximum -8.8°C (19/1).



Deviation of maximum temperature from normal values

Third Decameron

Minimum: temporal rising values everywhere at the beginning but significant fall at the end of the period.

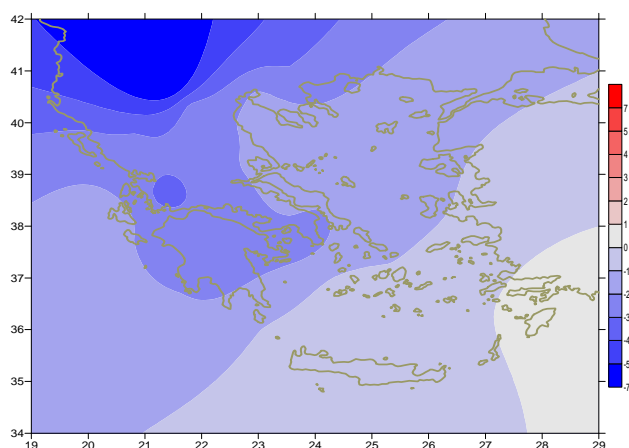
More specific:

-5.7°C in Tripoli at 26/1,
 -10.4°C in Alexandroupoli at 31/1,
but also -2°C in Tatoi, -1.2°C in New Filadelfia at 31/1.

Maximum: very low values at the end even over southern mainland and south Aegean area.

For example:

3.4°C in Mikonos,
 3.9°C in Milos,
 4.2°C in Hellinikon at 31/1.



Deviation of minimum temperature from normal values



P r e c i p i t a t i o n

First Decameron

Remarkable precipitation amounts (snowfalls, rainfalls)

From the middle of the period.

More specific:

62mm in Chrisoupoli at 6/1,

49mm in Skiros at 8/1,

42mm in Souda, 43mm in Iraklion at 10/1.

Second Decameron

Relatively low precipitation amounts mainly between 11 and 12/1.

More specific:

22mm in Tatoi, 18mm in Elefsina at 11/1,

27mm in Kastelli, 20mm in Kasos at 12/1.

Third Decameron

Very high precipitation amounts (rainfalls ,thunderstorms)

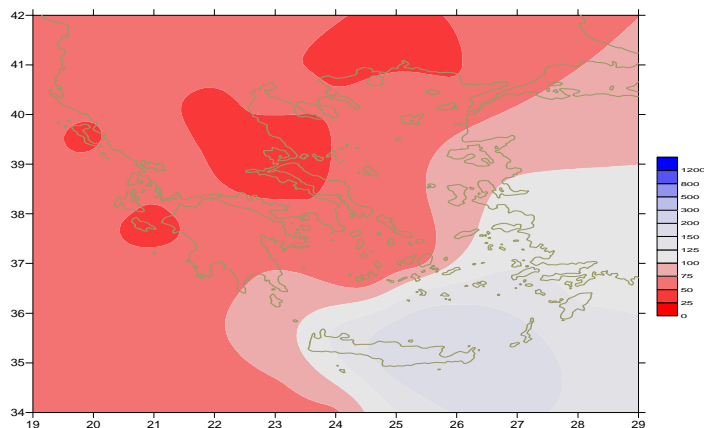
Over Aegean area.

More specific:

56mm in Samos, 89mm Ikaria at 24/1,

57mm in Mitilini at 25/1,

41mm in Souda at 30/1.



*Deviation of monthly precipitation
height from normal values (%)*

TABLE OF MEAN VALUES

STATION	Longitude	Latitude	Tmean	TX	TN	RR	INST
SERRES	23,53	41,07	,9	6,5	-3,2	17	57
FLORINA	21,40	40,78	-5,6	-0,4	-10,4	10	66
KASTORIA	21,27	40,45	-0,2	4,7	-5,1	24	143
TRIKALA_IMATHIAS	22,55	40,60					
THESSALONIKI	22,97	40,52	3,3	6,8	-0,6	29	162
CHRYSOUPOLI	24,62	40,92	4	7,8	0,2	106	152
ALEXANDROUPOLI	25,95	40,85	3,2	6,9	-0,4	29	121
KOZANI	21,83	40,28	-0,1	3,8	-3,8	13	
KERKYRA	19,92	39,62	7,2	11,4	2,5	55	158
IOANNINA	20,82	39,70	2,4	6,9	-2,6	91	126
PREVEZA	20,76	38,91	7,6	11,5	4,7	62	
TRIKALA_THESSALIAS	21,77	39,52					
LARISA	22,45	39,65	3,3	9,2	-1,7	14	169
LIMNOS	25,23	39,92	5,5	8,5	2,7	46	118
ARTA	21,00	39,17					
AGHIALOS	22,78	39,21	4,9	9,8	0,8	13	159
MYTILINI	26,60	39,05	7,5	10	5,6	123	126
VELO	22,77	37,97					
AGRINIO	21,35	38,60	5,4	11,8	0	72	183
LAMIA	22,43	38,87					
ANDRAVIDA	21,28	37,92	7,3	12	3	54	175
SKYROS	24,48	38,96	7,4	9,7	5,6	48	98
ARGOSTOLI	20,50	38,12	10	13,2	7,2	73	170
ARAXOS	21,42	38,15	7,8	12,1	3,5	57	188
TANAGRA	23,57	38,33	5	9,4	1,5	31	126
HIOS	26,13	38,35	7,7	10,4	4,9	108	113
PYRGOS	21,42	37,67	8,2	12,9	2,9	57	143
TRIPOLI	22,40	37,52					
TATOI	23,78	38,10	5,3	8,8	2	47	
HELLINIKO	23,73	37,90	7,9	11,6	4,2	31	125
ELEYSINA	23,55	38,07	6,8	10,4	3,3	34	
ZAKYNTHOS	20,88	37,75	8,8	12,5	6	31	149
SAMOS	26,92	37,68	8,5	11,1	6,2	169	
ARGOS	22,75	37,63					
KALAMATA	22,02	37,07	7,3	13,2	2,9	73	183
NAXOS	25,37	37,10	10,3	12,3	8,4	43	94
METHONI	21,70	36,82	10,2	12,9	5,7	72	173
MHLOS	24,43	36,73					
SPATA	23,95	37,95	6,8	10,4	2,7	25	
KOS	27,08	36,80	9,2	11,3	6,9	107	
KYTHIRA	22,98	36,15					
SANTORINI	25,41	36,41	10,3	12,1	9	85	128
SOUDA	24,12	35,55	9,3	12,1	7,1	198	107
RODOS	28,08	36,40	11,1	13	9,2	178	139
MYKONOS	25,35	37,43	8,8	10,9	7,5	37	
HERAKLEIO	25,18	35,33	10,6	13,3	8,1	169	99
IERAPETRA	25,73	35,02					
SITEIA	26,10	35,21	10,6	12,1	8,6	174	102
RETHYMNO	24,50	35,36					
TYMPAKI	24,76	35,06	10,4	14,3	6,3	113	170
KASTELI	25,33	35,18	7,5	10,5	5,2	264	107
KARPATOS	27,15	35,42					
PAROS	25,13	37,02	9,5	11,8	7,7	36	135
SYROS	24,95	37,42	9,1	11,4	7,3	64	138
IKARIA	26,35	37,68	9,3	10,5	7,8	221	

TABLE OF DEVIATIONS
FROM NORMAL VALUES

STATION	TMEAN (deviation) (I)	PRECI (deviation %) (II)
SERRES	-1,9	47
FLORINA	-6	26
THESSALONIKI	-1,7	65
ALEXANDROUPOLI	-1,6	48
KOZANI	-2,1	33
KERKYRA	-2,4	41,8
IOANNINA	-2,2	69,8
LARISA	-1,8	47,1
LIMNOS	-2	63,6
AGHIALOS	-1,5	27
MYTILINI	-1,8	94,7
AGRINIO	-2,8	59,6
SKYROS	-2,5	61,4
ARGOSTOLI	-1,6	62,5
ARAXOS	-2,3	59,1
HIOS	-1,9	92,6
HELLINIKO	-2,3	68,6
ZAKYNTHOS	-2,5	20,6
SAMOS	-1,8	113,8
KALAMATA	-2,9	64,4
NAXOS	-1,7	60,3
METHONI	-1,1	61,5
SANTORINI	-1	132
SOUDA	-1,5	139,7
RODOS	-0,6	120,4
HERAKLIO	-1,4	184,7
SITIA	-1,7	188,9

(I) deviation of mean temperature from normal values
(II) deviation of monthly precipitation height from normal values %.

Climatic Bulletin

General Description

Precipitation amounts were very higher than normal values over East and South Aegean but lower over rest parts of Greece.
The mean temperature varied lower than normal values everywhere.

Climatic Parameters :

- ❖ **Normal Values** : normal values for various parameters (temperature, precipitation, etc) are defined as mean values calculated for 30 years. These normal values are used as basis and represent the mean situation. They can be specified in 10 daily, monthly, seasonally and yearly level and are used for the trend comparison of 10 days, month, season or year as: rainy decameron, mild winter, cool August etc.

Measurement :

- ❖ **Precipitation**
1 mm = 1 litre/m²

Table Legend :

Tmean : Mean Temperature
TN : Minimum Temperature
TX : Maximum Temperature
RR : Precipitation height(mm)
INST : Sun Duration (hours)

UTC hours (Universal Time Coordinates) in Greece :

- ❖ Winter : UTC hour = local hour - 2
- ❖ Summer : UTC hour = local hour - 3

© Hellenic National Meteorological Service
Reproduction is prohibited without written authorization
14 El.Venizelou 16777
Helliniko, Athens
Greece