




# Climatic Bulletin

June 2012

 Max  
temperature

 Min  
temperature

 Mean  
temperature

 Precipitation

 Sunshine  
duration



June was a hot month in general, with long periods of high temperatures, but not extreme ones.

The appearance of strong Northern winds worked as a great factor of reduction of discomfort over the greater Aegean area.

Meanwhile, the sensation of hot weather was strong during the day and the night over most parts of Greece.



ΕΘΝΙΚΗ  
ΜΕΤΕΩΡΟΛΟΓΙΚΗ  
ΥΠΗΡΕΣΙΑ

HELLENIC NATIONAL METEOROLOGICAL SERVICE



# Temperature

## First Decameron

**Minimum:** relatively low values at the beginning which increased later.

More specific (the lowest):

$6.9^{\circ}\text{C}$  in Tripoli,  $10.6^{\circ}\text{C}$  in Konitsa (2/6),

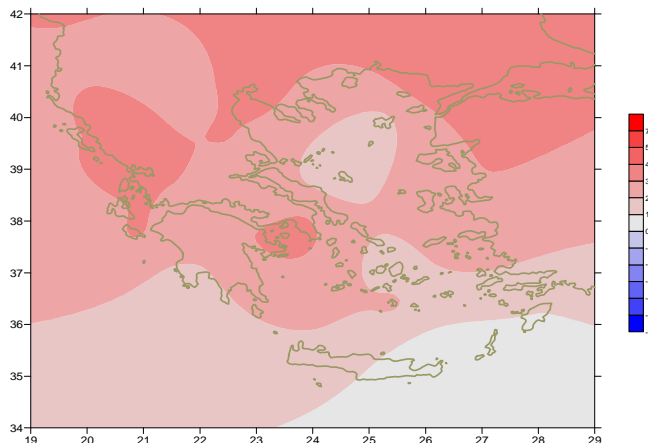
$14^{\circ}\text{C}$  in N. Filadelfia (1/6).

**Maximum:** high values over mainland at the end.

More specific:

$35.3^{\circ}\text{C}$  in Serres,  $35.7^{\circ}\text{C}$  in Argos ,

$35.2^{\circ}\text{C}$  in Hellinikon (10/6).



*Deviation of mean temperature from normal values*

## Second Decameron

**Minimum:** low values over Northwestern parts(14/6).

More specific:

More specific (the lowest):

$6.5^{\circ}\text{C}$  in Florina,  $12.2^{\circ}\text{C}$  in Ioannina,

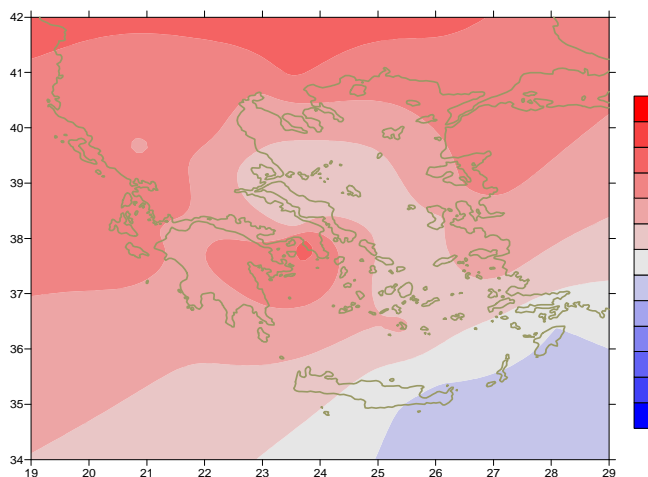
$12.6^{\circ}\text{C}$  in Kastoria at 14/ 6.

**Maximum:** in contrast high values at the same period over rest parts.

More specific (the highest):

$38.4^{\circ}\text{C}$  in Argos,  $37.4^{\circ}\text{C}$  in Astros,

$36.7^{\circ}\text{C}$  in Lamia,  $36^{\circ}\text{C}$  in Elefsina and Samos at 14/ 6.



*Deviation of maximum temperature from normal values*

## Third Decameron

**Minimum:** high values everywhere (with exception of northwestern mainland (21-22/6).

More specific (the highest) :

$25^{\circ}\text{C}$  in Samos at 21/6,  $26.6^{\circ}\text{C}$  in Argostoli,  $26.6^{\circ}\text{C}$  in

Tatoi,  $26^{\circ}\text{C}$  in Karistos at 22/6.

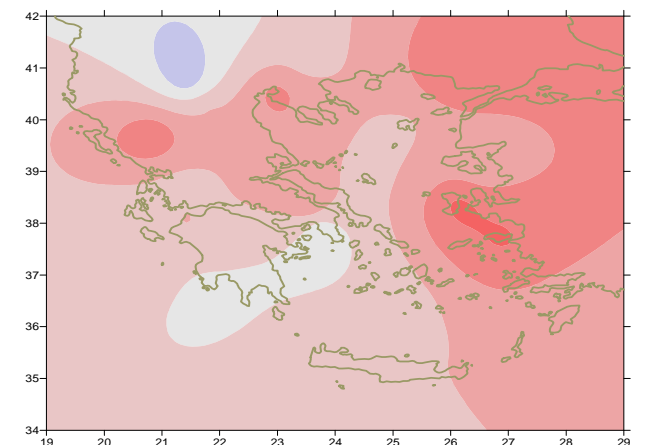
**Maximum:** high values in the middle of the period.

For example:

$39.3^{\circ}\text{C}$  in Serres and

$38^{\circ}\text{C}$  in Agrinio at 23/6,

$38.8^{\circ}\text{C}$  in Argos at 24/6.



*Deviation of minimum temperature from normal values*



## Precipitation

### First Decameron

Dry period with exception of northern Ionian sea. Ipirus, and north mainland ( locally) for two days (5-6/6).

More specific:

*14mm in Konitsa , 13mm in Kerkyra ,  
9mm in Kastoria and Preveza at 5/6,  
8mm in Alexandroupoli at 6/6.*

### Second Decameron

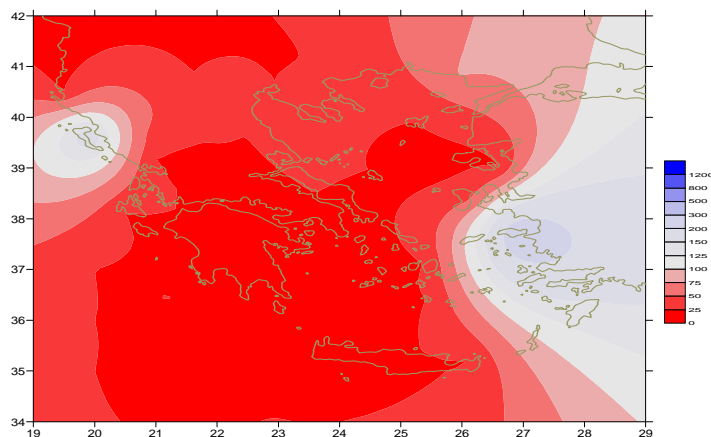
Dry in general.

### Third Decameron

Local rainfalls and thunderstorms recorded on 24<sup>th</sup> of June over northern mainland but it was again a dry period, in general.

More specific:

*6mm in Thessaloniki, 2mm in Edessa and Serres at 24/6.*



*Deviation of monthly precipitation  
height from normal values (%)*

TABLE OF MEAN VALUES

STATION	Longitude	Latitude	Tmean	TX	TN	RR	INST
SERRES	23,53	41,07	27,1	33,8	17,8	1	219
FLORINA	21,40	40,78	23,4	29,8	11,3	2	340
KASTORIA	21,27	40,45	23,9	30	13,2	9	346
TRIKALA_IMATHIAS	22,55	40,60					
THESSALONIKI	22,97	40,52	27,7	31,9	19,4	7	383
CHRYSOUPOLI	24,62	40,92	26	29,6	19	7	344
ALEXANDROUPOLI	25,95	40,85	26,8	30,8	18,8	8	371
KOZANI	21,83	40,28	23,9	29,7	14,8	6	
KERKYRA	19,92	39,62	26,8	31,6	19,1	15	380
IOANNINA	20,82	39,70	25,2	30,5	16,8	6	356
PREVEZA	20,76	38,91	25,4	29,6	19,2	9	
TRIKALA_THESSALIAS	21,77	39,52					
LARISA	22,45	39,65	28	33,6	17,1	0	374
LIMNOS	25,23	39,92	25	29,1	18,6	0	396
ARTA	21,00	39,17					
AGHIALOS	22,78	39,21	26,9	30,5	18,8	0	374
MYTILINI	26,60	39,05	27,5	31,6	21,4	0	407
VELO	22,77	37,97					
AGRINIO	21,35	38,60	27,5	33,7	16,5	0	
LAMIA	22,43	38,87					
ANDRAVIDA	21,28	37,92	25,6	30	16,8	0	384
SKYROS	24,48	38,96	25,1	27,4	20,8	0	335
ARGOSTOLI	20,50	38,12	26,1	29,4	19,5	0	369
ARAXOS	21,42	38,15	26,9	30,9	18,5	0	338
TANAGRA	23,57	38,33	27,4	31,3	18,4	0	379
HIOS	26,13	38,35	26,8	29,6	21,5	2	372
PYRGOS	21,42	37,67	27	32	16,5	0	302
TRIPOLI	22,40	37,52	24,8	31,1	13,1	0	371
TATOI	23,78	38,10	27	31,3	19,2	0	
HELLINIKO	23,73	37,90	28,6	32,9	20,4	0	396
ELEYSINA	23,55	38,07	28,9	33,1	22	0	
ZAKYNTHOS	20,88	37,75	27,2	31,4	20,1	0	407
SAMOS	26,92	37,68	28	32,1	22,4	14	
ARGOS	22,75	37,63					
KALAMATA	22,02	37,07	26	31,2	16,9	0	383
NAXOS	25,37	37,10	24,6	26,9	21,2	0	392
METHONI	21,70	36,82	24	27,6	19,1	0	375
MHLOS	24,43	36,73					
SPATA	23,95	37,95	25,4	29,9	19,4	0	
KOS	27,08	36,80	25,6	29,4	21,8	0	
KYTHIRA	22,98	36,15					
SANTORINI	25,41	36,41	25,6	28,8	21,2	0	368
SOUDA	24,12	35,55	26,2	30,2	20,4	0	397
RODOS	28,08	36,40	25,8	28,4	22,2	2	383
MYKONOS	25,35	37,43	24,4	26,9	21,4	0	
HERAKLEIO	25,18	35,33	25,3	27,6	20,5	0	384
IERAPETRA	25,73	35,02					
SITEIA	26,10	35,21	24,4	27,3	21,4	0	391
RETHYMNO	24,50	35,36					
TYMPAKI	24,76	35,06	26,6	30,5	18,9	0	393
KASTELI	25,33	35,18	24,2	28,5	17,9	0	350
KARPATOS	27,15	35,42	24,7	27,7	22,4	0	
PAROS	25,13	37,02	25,7	29,1	21,4	0	383
SYROS	24,95	37,42	25,9	29,1	21,9	0	384
IKARIA	26,35	37,68	25,1	26,5	22,5	3	

**TABLE OF DEVIATIONS  
FROM NORMAL VALUES**

STATION	TMEAN ( deviation ) (I)	PRECI (deviation % ) (II)
SERRES	3,2	20
FLORINA	2,6	5
THESSALONIKI	3,5	22
ALEXANDROUPOLI	3,8	29
KOZANI	2,6	15
KERKYRA	3	11
IOANNINA	3,5	13
LARISA	3,1	
LIMNOS	1,7	
AGHIALOS	2,5	
MYTILINI	2,9	
AGRINIO	3	
SKYROS	1,4	
ARGOSTOLI	2,9	
ARAXOS	2,9	
HIOS	2,9	13
HELLINIKO	3,6	
ZAKYNTHOS	3,1	
SAMOS	2,8	295
KALAMATA	1,9	
NAXOS	1,4	
METHONI	1,5	
SANTORINI	2,2	
SOUDA	1,8	
RODOS	1,1	69
HERAKLIO	1	
SITIA	0	

(I) deviation of mean temperature from normal values

(II) deviation of monthly precipitation height from normal values %.

# Climatic Bulletin

## General Description

Precipitation amounts were higher than normal values only over parts of Ipirus and northern Ionian sea. In contrast, they were lower over rest parts while the precipitation height was at zero in most of central and south parts. The mean temperature varied higher enough than normal values, mainly over central and south mainland.

### Climatic Parameters :

- ❖ **Normal Values** : normal values for various parameters (temperature, precipitation, etc) are defined as mean values calculated for 30 years. These normal values are used as basis and represent the mean situation. They can be specified in 10 daily, monthly, seasonally and yearly level and are used for the trend comparison of 10 days, month, season or year as: rainy decameron, mild winter, cool August etc.

### Measurement :

- ❖ **Precipitation**  
1 mm = 1 litre/m<sup>2</sup>

### Table Legend :

Tmean : Mean Temperature  
 TN : Minimum Temperature  
 TX : Maximum Temperature  
 RR : Precipitation height(mm)  
 INST : Sun Duration (hours)

### UTC hours (Universal Time Coordinates) in Greece :

- ❖ Winter : UTC hour = local hour - 2
- ❖ Summer : UTC hour = local hour - 3

© Hellenic National Meteorological Service  
 Reproduction is prohibited without written authorization  
 14 El.Venizelou 16777  
 Helliniko, Athens  
 Greece