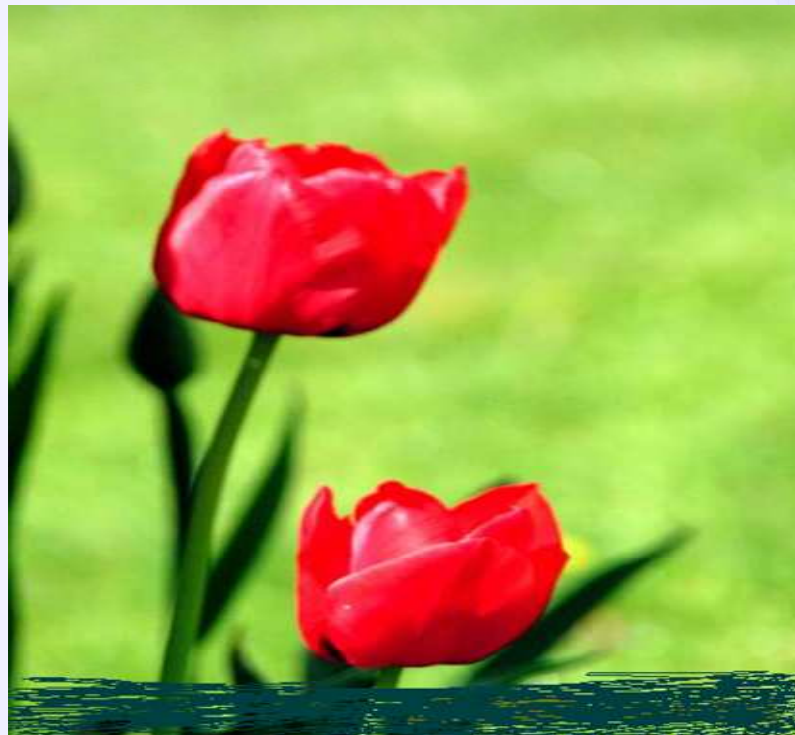




Climatic Bulletin

April 2013

-  Max temperature
-  Min temperature
-  Mean temperature
-  Precipitation
-  Sunshine duration



April was dry and warm in general. It started with gale force south winds and frequent transportation of dust from Northern Africa to greater area of Greece. A period with northern winds, very good visibility and fall in temperature took place in the middle. Afterwards the temperature was rising gradually climbing to its highest values during last two days. Meanwhile no significant amounts of precipitation recorded after the 8th day of month.



ΕΘΝΙΚΗ
ΜΕΤΕΩΡΟΛΟΓΙΚΗ
ΥΠΗΡΕΣΙΑ

HELLENIC NATIONAL METEOROLOGICAL SERVICE



Temperature

First Decameron

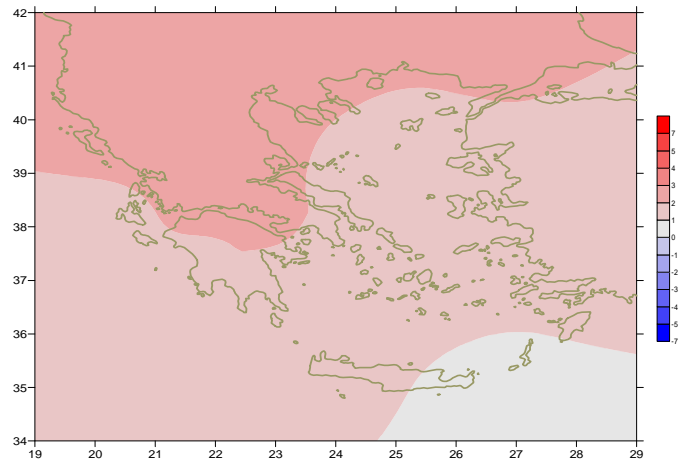
Minimum: variation of values:
 over north mainland from 2°C to 11°C .
 over central mainland from 4°C to 13°C .
 over rest parts from 7°C to 15°C .
Maximum: high values in the middle of the period.
 More specific (the highest):
 30.4°C in Iraklion,
 29.6°C in Souda and 26.2°C in Naxos at 6/4.

Second Decameron

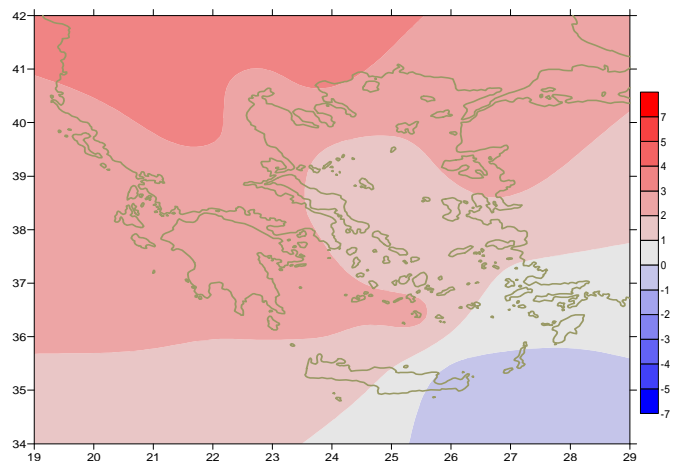
Minimum: variation of values:
 over north mainland from 2°C to 8°C .
 over central mainland from 4°C to 14°C .
 over rest parts from 8°C to 16°C .
Maximum: declining values in the middle of the month.
 More specific (the highest):
 23.5 in Larisa, 22.6°C in Siros at 12/4,
 25.4°C in Tripoli at 13/4.
 22.7°C in Argos at 15/4.

Third Decameron

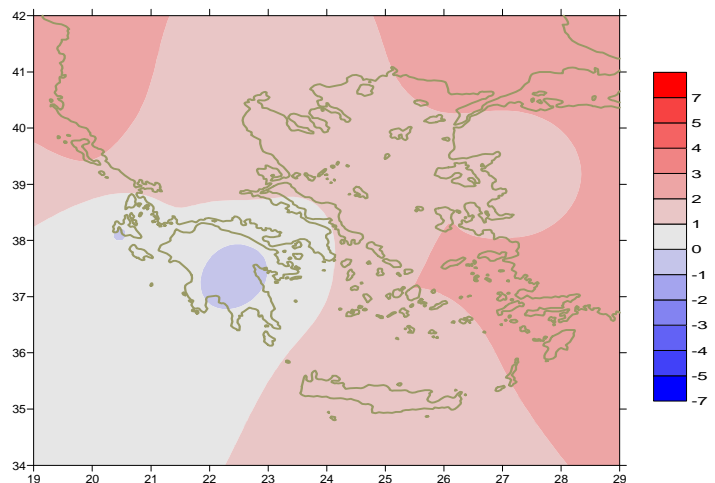
Minimum: variation of values:
 over north mainland from 3°C to 13°C .
 over central mainland from 5°C to 15°C .
 over rest parts from 9°C to 19°C .
Maximum: very values at the end.
 More specific (the highest):
 32.1°C in Konitsa at 29/4,
 30.8°C in Thessaloniki, 33.2°C in Serres.
 34.4°C in Argos at 30/4.



Deviation of mean temperature from normal values



Deviation of maximum temperature from normal values



Deviation of minimum temperature from normal values



Precipitation

First Decameron

Significant precipitation amounts over Northwestern mainland and eastern Aegean.

More specific:

*23mm in Konitsa at 2/4,
37mm in Chios, 34mm in Samos, 19mm in Kos at 3/4,
58mm in Florina, 35mm in Argostoli at 7/4,
33mm in Skiathos at 8/4.*

Second Decameron

Significant precipitation amounts locally over southwest mainland and Southeast Aegean.

More specific:

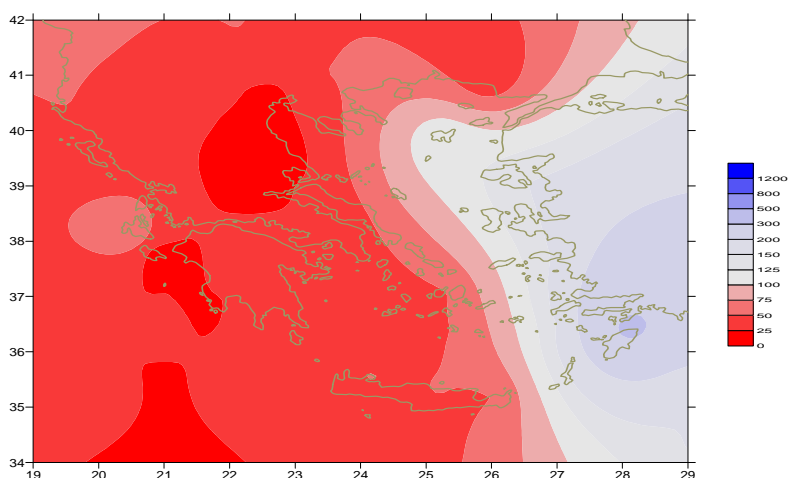
*9mm in Kalamata at 15/4,
47mm in Rodos at 19/4.*

Third Decameron

Very low precipitation amounts over northern flat mainland at the beginning.

More specific:

*1mm in Alexandroupoli at 21/4
1mm in Kerkira, 1mm in Ioannina at 22/4.*



*Deviation of monthly precipitation
height from normal values (%)*

TABLE OF MEAN VALUES

| STATION | Longitude | Lattitude | Tmean | TX | TN | RR | INST |
|--------------------|-----------|-----------|-------|------|------|----|------|
| SERRES | 23,53 | 41,07 | 16,9 | 23,6 | 9,1 | 18 | 187 |
| FLORINA | 21,40 | 40,78 | | | | | |
| KASTORIA | 21,27 | 40,45 | 14,3 | 19,8 | 5,9 | 36 | 240 |
| TRIKALA_IMATHIAS | 22,55 | 40,60 | | | | | |
| THESSALONIKI | 22,97 | 40,52 | 16,5 | 21,3 | 8,8 | 8 | 224 |
| CHRYSOUPOLI | 24,62 | 40,92 | 15,5 | 19,7 | 10,1 | 23 | 227 |
| ALEXANDROUPOLI | 25,95 | 40,85 | 15,3 | 19,7 | 9,6 | 10 | 221 |
| KOZANI | 21,83 | 40,28 | 14,4 | 20 | 7,1 | 9 | |
| KERKYRA | 19,92 | 39,62 | 17,4 | 21,9 | 11,6 | 14 | 250 |
| IOANNINA | 20,82 | 39,70 | | | | | |
| PREVEZA | 20,76 | 38,91 | 17,2 | 21,4 | 12,1 | 12 | |
| TRIKALA_THESSALIAS | 21,77 | 39,52 | | | | | |
| LARISA | 22,45 | 39,65 | 16,7 | 22,9 | 8 | 2 | 237 |
| LIMNOS | 25,23 | 39,92 | 15,5 | 19,4 | 10,3 | 40 | 250 |
| ARTA | 21,00 | 39,17 | | | | | |
| AGHIALOS | 22,78 | 39,21 | 16,6 | 21,5 | 9,3 | 2 | 272 |
| MYTILINI | 26,60 | 39,05 | 17,7 | 21,9 | 12,6 | 61 | 274 |
| VELO | 22,77 | 37,97 | | | | | |
| AGRINIO | 21,35 | 38,60 | | | | | |
| LAMIA | 22,43 | 38,87 | | | | | |
| ANDRAVIDA | 21,28 | 37,92 | 17 | 22 | 10,2 | 14 | 277 |
| SKYROS | 24,48 | 38,96 | 16,5 | 19,3 | 13,1 | 14 | 258 |
| ARGOSTOLI | 20,50 | 38,12 | 17 | 20,6 | 11,5 | 38 | 294 |
| ARAXOS | 21,42 | 38,15 | 17,6 | 21,9 | 10,6 | 9 | 262 |
| TANAGRA | 23,57 | 38,33 | 16,6 | 21,6 | 7,8 | 8 | 274 |
| HIOS | 26,13 | 38,35 | 17 | 20,2 | 12 | 58 | 270 |
| PYRGOS | 21,42 | 37,67 | | | | | |
| TRIPOLI | 22,40 | 37,52 | 13,9 | 20,1 | 4,5 | 25 | 270 |
| TATOI | 23,78 | 38,10 | 16,5 | 21,5 | 8,8 | 6 | |
| HELLINIKO | 23,73 | 37,90 | | | | | |
| ELEYSINA | 23,55 | 38,07 | 18,5 | 23 | 11,2 | 10 | |
| ZAKYNTHOS | 20,88 | 37,75 | 17,3 | 21,7 | 11,9 | 6 | 276 |
| SAMOS | 26,92 | 37,68 | 17,6 | 21 | 12,8 | 48 | |
| ARGOS | 22,75 | 37,63 | | | | | |
| KALAMATA | 22,02 | 37,07 | 16,7 | 22,3 | 8,9 | 10 | 263 |
| NAXOS | 25,37 | 37,10 | 17,6 | 20,2 | 14,5 | 7 | 294 |
| METHONI | 21,70 | 36,82 | | | | | |
| MHLOS | 24,43 | 36,73 | | | | | |
| SPATA | 23,95 | 37,95 | 17,5 | 21,9 | 10,5 | 4 | |
| KOS | 27,08 | 36,80 | 17,3 | 20,2 | 14,1 | 36 | |
| KYTHIRA | 22,98 | 36,15 | | | | | |
| SANTORINI | 25,41 | 36,41 | 17,6 | 20,6 | 14 | 9 | 278 |
| SOUDA | 24,12 | 35,55 | 17,7 | 21,8 | 12,9 | 12 | 302 |
| RODOS | 28,08 | 36,40 | 17,9 | 20,5 | 14,9 | 78 | 294 |
| MYKONOS | 25,35 | 37,43 | 16,7 | 19,2 | 15 | 5 | |
| HERAKLEIO | 25,18 | 35,33 | 17,8 | 20,9 | 13,2 | 12 | 268 |
| IERAPETRA | 25,73 | 35,02 | | | | | |
| SITEIA | 26,10 | 35,21 | 17,2 | 19,7 | 14,2 | 9 | 242 |
| RETHYMNO | 24,50 | 35,36 | | | | | |
| TYMPAKI | 24,76 | 35,06 | | | | | |
| KASTELI | 25,33 | 35,18 | 15,9 | 20,4 | 10 | 19 | 256 |
| KARPATHOS | 27,15 | 35,42 | 18 | 20,3 | 15,7 | 0 | |
| PAROS | 25,13 | 37,02 | | | | | |
| SYROS | 24,95 | 37,42 | 16,7 | 19,8 | 13,8 | 1 | 206 |
| IKARIA | 26,35 | 37,68 | 16,4 | 18,8 | 14,2 | 11 | |

TABLE OF DEVIATIONS
FROM NORMAL VALUES

| STATION | TMEAN (deviation) (I) | PRECI (deviation %) (II) |
|----------------|-------------------------------|----------------------------------|
| SERRES | 2.6 | 51 |
| FLORINA | | |
| THESSALONIKI | 2.3 | 22 |
| ALEXANDROUPOLI | 2.1 | 25 |
| KOZANI | 2.5 | 22 |
| KERKYRA | 2.3 | 23 |
| IOANNINA | | |
| LARISA | 2.7 | 7 |
| LIMNOS | 1.7 | 124 |
| AGHIALOS | 2.4 | 6 |
| MYTILINI | 1.9 | 130 |
| AGRINIO | | |
| SKYROS | 1.3 | 64 |
| ARGOSTOLI | 1.6 | 64 |
| ARAXOS | 2.2 | 22 |
| HIOS | 1.7 | |
| HELLINIKO | | |
| ZAKYNTHOS | 1.8 | 12 |
| SAMOS | 1.5 | 151 |
| KALAMATA | 1.3 | 21 |
| NAXOS | 1.5 | 38 |
| METHONI | | |
| SANTORINI | 2 | 47 |
| SOUDA | 1.9 | 38 |
| RODOS | 1.2 | 325 |
| HERAKLIO | 1.2 | 40 |
| SITIA | 0.4 | 33 |

(I) deviation of mean temperature from normal values

(II) deviation of monthly precipitation height from normal values %.

Climatic Bulletin

General Description

Precipitation amounts were quite higher than normal values over eastern Aegean, while over rest parts they were lower enough. The mean temperature varied higher than normal values everywhere.

Climatic Parameters :

- ❖ **Normal Values** : normal values for various parameters (temperature, precipitation, etc) are defined as mean values calculated for 30 years. These normal values are used as basis and represent the mean situation. They can be specified in 10 daily, monthly, seasonally and yearly level and are used for the trend comparison of 10 days, month, season or year as: rainy decameron, mild winter, cool August etc.

Measurement :

- ❖ **Precipitation**
1 mm = 1 litre/m²

Table Legend :

Tmean : Mean Temperature
 TN : Minimum Temperature
 TX : Maximum Temperature
 RR : Precipitation height(mm)
 INST : Sun Duration (hours)

UTC hours (Universal Time Coordinates) in Greece :

- ❖ Winter : UTC hour = local hour - 2
- ❖ Summer : UTC hour = local hour - 3

© Hellenic National Meteorological Service
 Reproduction is prohibited without written authorization
 14 El.Venizelou 16777
 Helliniko, Athens
 Greece