




# Climatic Bulletin

June 2013

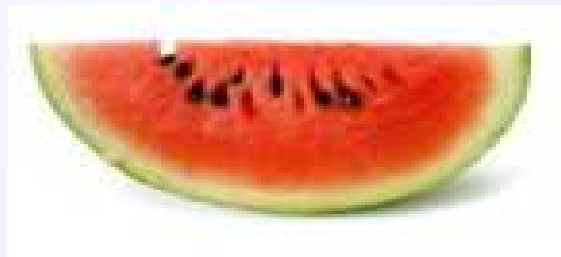
 **Max  
temperature**

 **Min  
temperature**

 **Mean  
temperature**

 **Precipitation**

 **Sunshine  
duration**



June had a cool first half period and a hot day (20/6) with quite high temperatures. In parallel significant amounts of precipitation recorded over most parts of country while hailstones caused damages mainly over northern mainland



ΕΘΝΙΚΗ  
**ΜΕΤΕΩΡΟΛΟΓΙΚΗ**  
ΥΠΗΡΕΣΙΑ

HELLENIC NATIONAL METEOROLOGICAL SERVICE



# Temperature

### First Decameron

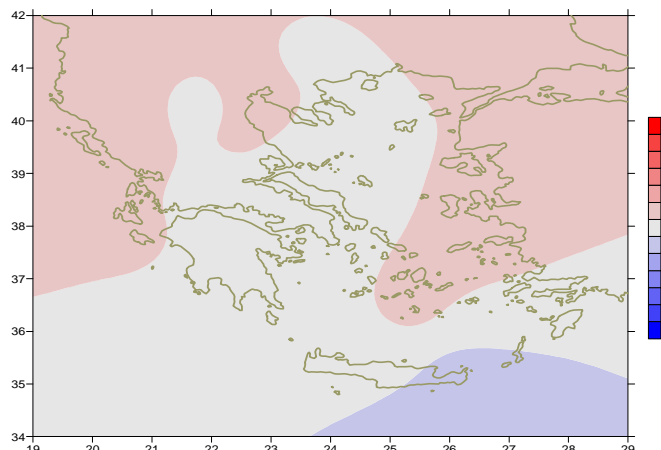
**Minimum:** variation of values:  
 over north mainland from 4°C to 15°C .  
 over central mainland from 9°C to 16°C .  
 over rest parts from 10°C to 20°C .  
**Maximum:** variation of values:  
 over north mainland from 18°C to 28°C .  
 over central mainland from 22°C to 31°C .  
 over rest parts from 24°C to 33°C .

### Second Decameron

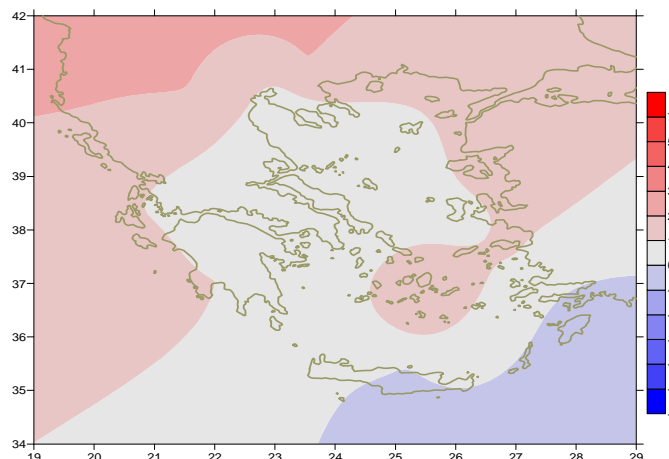
**Minimum:** variation of values:  
 over north mainland from 9°C to 19°C .  
 over central mainland from 11°C to 20°C .  
 over rest parts from 14°C to 23°C .  
**Maximum:**  
 More specific (the highest):  
 38.6 in Kerkira, 38°C in Argostoli,  
 37.2°C in Konitsa at 20/6.

### Third Decameron

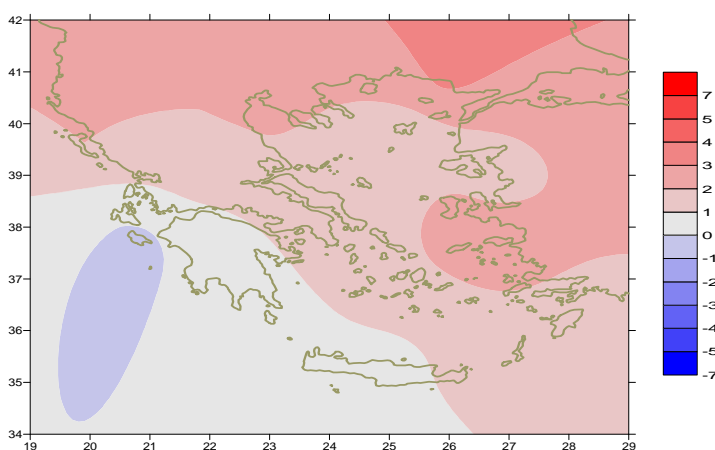
**Minimum:** variation of values:  
 over north mainland from 13°C to 22°C .  
 over central mainland from 16°C to 25°C .  
 over rest parts from 20°C to 25°C .  
**Maximum:**  
 variation of values:  
 over north mainland from 24°C to 35°C .  
 over central mainland from 26°C to 37°C .  
 over rest parts from 26°C to 35°C .



*Deviation of mean temperature from normal values*



*Deviation of maximum temperature from normal values*



*Deviation of minimum temperature from normal values*



## Precipitation

### First Decameron

Significant precipitation amounts locally over mainland (thunderstorms and hail ).

More specific:

*22mm in Chrissoupoli (Kavala) ,  
30mm in Kerkira, 22mm in Preveza at 2/6,  
18mm in Tripoli at 8/6.*

### Second Decameron

Significant precipitation amounts locally over mainland and Aegean sea.

More specific:

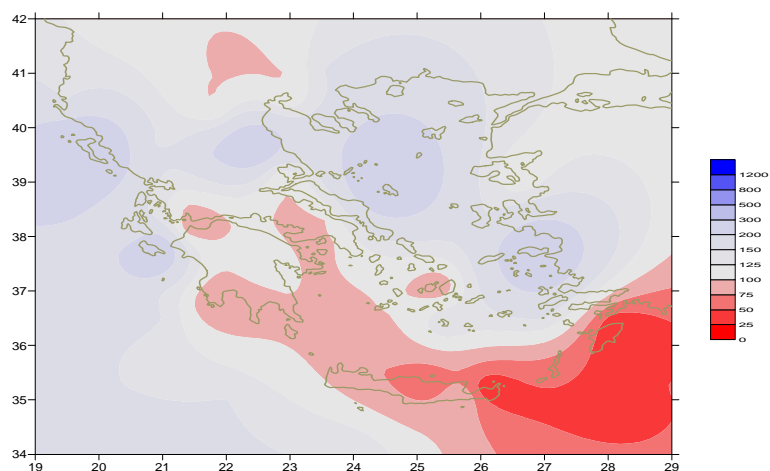
*24mm in Edessa at 11/6,  
15mm in Skiathos 13mm in Spata, 18mm in Skyros at 13/6.  
18mm in Milos at 14/6.*

### Third Decameron

Significant precipitation amounts locally over northern mainland.

More specific:

*8mm in Konitsa at 22/6, 20mm in Serres at 23/6,  
9mm in Kozani at 27/6, 17mm in Edessa at 30/6.*



*Deviation of monthly precipitation  
height from normal values (%)*

TABLE OF MEAN VALUES

STATION	Longitude	Latitude	Tmean	TX	TN	RR	INST
SERRES	23,53	41,07	24,7	31,5	18,6	62	292
FLORINA	21,40	40,78					
KASTORIA	21,27	40,45	22	27,9	13	21	282
TRIKALA_IMATHIAS	22,55	40,60					
THESSALONIKI	22,97	40,52	25,6	29,8	18,5	24	317
CHRYSOUPOLI	24,62	40,92	23,7	27,1	17,9	71	294
ALEXANDROUPOLI	25,95	40,85	24,4	28,5	18,1	36	309
KOZANI	21,83	40,28	22,1	28,1	14,9	27	
KERKYRA	19,92	39,62	25,3	29,7	18,4	32	357
IOANNINA	20,82	39,70					
PREVEZA	20,76	38,91	23,7	27,4	18,8	22	
TRIKALA_THESSALIAS	21,77	39,52					
LARISA	22,45	39,65	26	31,5	16,8	56	319
LIMNOS	25,23	39,92	23,8	27,5	18,2	34	337
ARTA	21,00	39,17					
AGHIALOS	22,78	39,21	25,3	29,3	17,9	21	328
MYTILINI	26,60	39,05	26,3	30,1	20,6	5	388
VELO	22,77	37,97					
AGRINIO	21,35	38,60					
LAMIA	22,43	38,87					
ANDRAVIDA	21,28	37,92	24	28	16,9	4	365
SKYROS	24,48	38,96	24	26,1	20,4	29	291
ARGOSTOLI	20,50	38,12	24,2	27,3	18,5	26	372
ARAXOS	21,42	38,15	24,9	28,7	17,1	6	302
TANAGRA	23,57	38,33	25,6	30	17,3	11	337
HIOS	26,13	38,35	25,3	28,2	19,6	7	345
PYRGOS	21,42	37,67					
TRIPOLI	22,40	37,52	22	28	12,2	27	277
TATOI	23,78	38,10	24,7	29	17,2	50	
HELLINIKO	23,73	37,90					
ELEYSINA	23,55	38,07	26,6	31	20,6	40	
ZAKYNTHOS	20,88	37,75	25,4	29,4	17,9	22	369
SAMOS	26,92	37,68	26,6	30,5	20,7	8	
ARGOS	22,75	37,63					
KALAMATA	22,02	37,07	24,4	29,8	16,4	4	327
NAXOS	25,37	37,10	24,4	27,3	21	2	372
METHONI	21,70	36,82					
MHLOS	24,43	36,73					
SPATA	23,95	37,95	25,6	29,2	18,3	14	
KOS	27,08	36,80	24,7	28	21,1	0	
KYTHIRA	22,98	36,15					
SANTORINI	25,41	36,41	24,8	28,2	21	4	339
SOUDA	24,12	35,55	24,8	28,9	19,3	2	373
RODOS	28,08	36,40	25,1	27,9	21,5	0	364
MYKONOS	25,35	37,43	23,9	26,6	21,1	6	
HERAKLEIO	25,18	35,33	24,6	27,2	19,6	1	452
IERAPETRA	25,73	35,02					
SITEIA	26,10	35,21	23,8	27,6	20,6	0	344
RETHYMNO	24,50	35,36					
TYMPAKI	24,76	35,06					
KASTELI	25,33	35,18	23,5	27,8	17,7	0	332
KARPATIOS	27,15	35,42	24	27	21,9	0	
PAROS	25,13	37,02					
SYROS	24,95	37,42					
IKARIA	26,35	37,68	24,3	27,8	20	13	350

TABLE OF DEVIATIONS  
FROM NORMAL VALUES

STATION	TMEAN ( deviation ) (I)	PRECI ( deviation % ) (II)
SERRES	0.8	141
FLORINA		
THESSALONIKI	1.4	76
ALEXANDROUPOLI	1.4	132
KOZANI	0.8	65
KERKYRA	1.5	224
IOANNINA		
LARISA	1.1	238
LIMNOS	0.5	155
AGHIALOS	0.9	100
MYTILINI	1.7	83
AGRINIO		
SKYROS	0.3	357
ARGOSTOLI	1	124
ARAXOS	0.9	66
HIOS	1.4	132
HELLINIKO		
ZAKYNTHOS	1.3	305
SAMOS	1.4	296
KALAMATA	0.3	62
NAXOS	1.2	72
METHONI		
SANTORINI	1.4	129
SOUDA	0.4	44
RODOS	0.4	0
HERAKLIO	0.3	31
SITIA	-0.6	0

(I) deviation of mean temperature from normal values  
(II) deviation of monthly precipitation height from normal values %.

# Climatic Bulletin

## General Description

Precipitation amounts were quite higher than normal values over the islands of Ionian sea and locally over mainland and Aegean islands. The mean temperature varied higher than normal values over the northern, western parts and locally over eastern Aegean.

### Climatic Parameters :

- ❖ **Normal Values** : normal values for various parameters (temperature, precipitation, etc) are defined as mean values calculated for 30 years. These normal values are used as basis and represent the mean situation. They can be specified in 10 daily, monthly, seasonally and yearly level and are used for the trend comparison of 10 days, month, season or year as: rainy decameron, mild winter, cool August etc.

### Measurement :

- ❖ **Precipitation**  
1 mm = 1 litre/m<sup>2</sup>

### Table Legend :

Tmean : Mean Temperature  
 TN : Minimum Temperature  
 TX : Maximum Temperature  
 RR : Precipitation height(mm)  
 INST : Sun Duration (hours)

### UTC hours (Universal Time Coordinates) in Greece :

- ❖ Winter : UTC hour = local hour - 2
- ❖ Summer : UTC hour = local hour - 3

© Hellenic National Meteorological Service  
 Reproduction is prohibited without written authorization  
 14 El.Venizelou 16777  
 Helliniko, Athens  
 Greece