




Climatic Bulletin

October 2013

 **Max
temperature**

 **Min
temperature**

 **Mean
temperature**

 **Precipitation**

 **Sunshine
duration**

October characterized by periods with strong weather phenomena but by fine days as well. Heavy rainfalls and thunderstorms combined with gale force winds caused a lot of local damages.



ΕΘΝΙΚΗ
ΜΕΤΕΩΡΟΛΟΓΙΚΗ
ΥΠΗΡΕΣΙΑ
HELLENIC NATIONAL METEOROLOGICAL SERVICE



Temperature

First Decameron

Minimum:

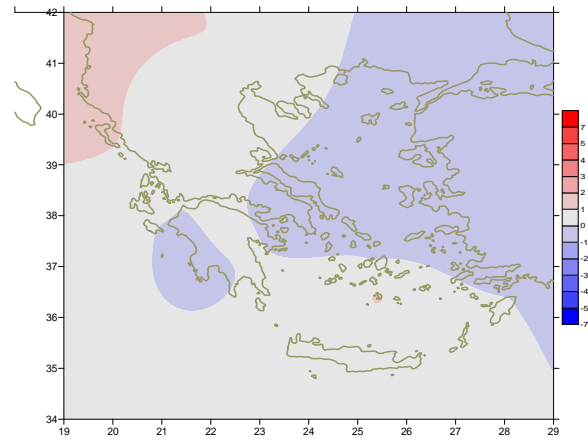
More specific varied :

from -2°C to 18°C over North mainland,
from 4°C to 20°C over central mainland,
from 19°C to 25°C over rest parts.

Maximum: high values mainly over mainland.

More specific:

from 16°C to 26°C over North mainland,
from 19°C to 27°C over central mainland,
from 18°C to 24°C over rest parts.



Deviation of mean temperature from normal values

Second Decameron

Minimum:

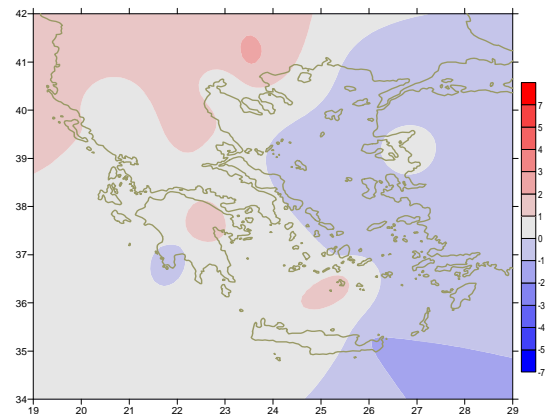
More specific varied :

from 2°C to 15°C over North mainland,
from 6°C to 19°C over central mainland,
from 10°C to 21°C over rest parts.

Maximum:

More specific:

from 14°C to 26°C over North mainland,
from 19°C to 28°C over central mainland,
from 21°C to 29°C over rest parts
(maximum 32°C in Sitia at 16/10).



Deviation of maximum temperature from normal values

Third Decameron

Minimum:

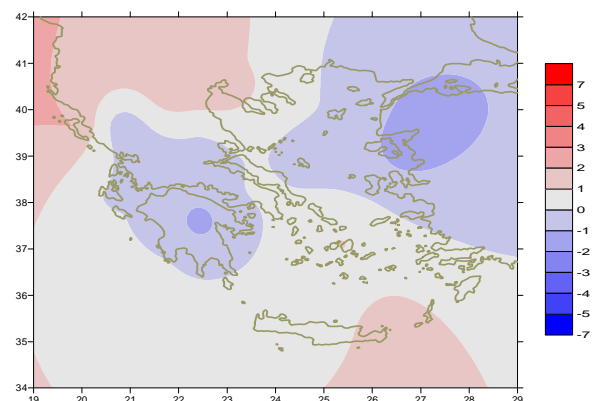
More specific varied :

from 1°C to 11°C over North mainland,
from 3°C to 15°C over central mainland,
from 6°C to 19°C over rest parts.

Maximum:

More specific:

From 16°C to 26°C over North mainland,
from 20°C to 28°C over central mainland,
from 19°C to 27°C over rest parts.



Deviation of minimum temperature from normal values



P r e c i p i t a t i o n

First Decameron

Locally strong rainfalls and thunderstorms over most parts .

More specific:

*64mm in Elefsina, 63mm in Alexandroupoli, 46mm in Mitilini,
45mm in Siros, 30mm in Kavala at 1/10,
43mm in Ikaria at 10/10.*

Second Decameron

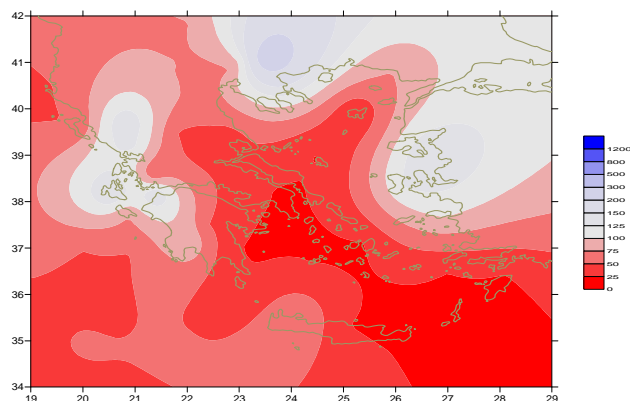
Locally strong rainfalls and thunderstorms temporarily mainly
over Ionian area, west mainland and Aegean area.

More specific:

*50mm in Konitsa at 11/10,
41mm in Preveza, 28mm in Argostoli at 16/10,
47mm in Limnos, 35mm in Mitilini, 33mm in Ikaria,
30mm in Mikonos at 17/10.*

Third Decameron

No significant precipitation recorded.



*Deviation of monthly precipitation
height from normal values (%)*

TABLE OF MEAN VALUES

STATION	Longitude	Latitude	Tmean	TX	TN	RR	INST
SERRES	23,53	41,07	16,3	23,3	10	28	167
FLORINA	21,40	40,78					
KASTORIA	21,27	40,45					
TRIKALA_IMATHIAS	22,55	40,60					
THESSALONIKI	22,97	40,52	17	21,5	12,6	9	197
CHRYSOUPOLI	24,62	40,92	15,3	20,2	10,5	14	214
ALEXANDROUPOLI	25,95	40,85	14,5	19,7	9,4	92	230
KOZANI	21,83	40,28	14,2	20,2	9,7	32	
KERKYRA	19,92	39,62	19,6	24,3	15,4	63	206
IOANNINA	20,82	39,70	15,4	21,6	7,8	58	166
PREVEZA	20,76	38,91	19,7	23,9	15,8	76	
TRIKALA_THESSALIAS	21,77	39,52					
LARISA	22,45	39,65	17	23,8	10	9	175
LIMNOS	25,23	39,92	16	19,9	12,3	56	227
ARTA	21,00	39,17					
AGHIALOS	22,78	39,21	17,1	22,2	12	20	204
MYTILINI	26,60	39,05	17,5	21,8	13,2	96	254
VELO	22,77	37,97					
AGRINIO	21,35	38,60					
LAMIA	22,43	38,87					
ANDRAVIDA	21,28	37,92	18,7	23,7	14	115	221
SKYROS	24,48	38,96	17,4	19,9	15	19	236
ARGOSTOLI	20,50	38,12	20	23,4	15,9	154	228
ARAXOS	21,42	38,15	18,9	23,6	13,7	104	235
TANAGRA	23,57	38,33	16,4	22,6	11,4	35	
HIOS	26,13	38,35	17,1	21	13,1	77	258
PYRGOS	21,42	37,67					
TRIPOLI	22,40	37,52	14,7	21,8	6,8	76	206
TATOI	23,78	38,10	17,2	22,6	12,4	29	
HELLINIKO	23,73	37,90					
ELEYSINA	23,55	38,07	19,4	24,2	14,3	46	
ZAKYNTHOS	20,88	37,75	19,6	23,7	15,7	84	215
SAMOS	26,92	37,68					
ARGOS	22,75	37,63					
KALAMATA	22,02	37,07	18,5	24,3	12,9	44	231
NAXOS	25,37	37,10	19,3	21,1	17,7	19	
METHONI	21,70	36,82					
MHLOS	24,43	36,73					
SPATA	23,95	37,95	18,4	27,8	12,1	22	
KOS	27,08	36,80	19,1	22,2	16,3	8	
KYTHIRA	22,98	36,15					
SANTORINI	25,41	36,41	20	23	16,8	5	278
SOUDA	24,12	35,55					
RODOS	28,08	36,40	20,6	23,7	17,1	34	281
MYKONOS	25,35	37,43	18,3	20,5	16,9	39	
HERAKLEIO	25,18	35,33	20,3	23,5	16,8	11	237
IERAPETRA	25,73	35,02					
SITEIA	26,10	35,21	20,3	22,4	18,3	0	219
RETHYMNO	24,50	35,36					
TYMPAKI	24,76	35,06					
KASTELI	25,33	35,18	18,1	22,7	13,5	7	254
KARPATIOS	27,15	35,42	21,4	24,3	19,7	3	
PAROS	25,13	37,02					
SYROS	24,95	37,42	19,2	21,9	16,9	53	278
IKARIA	26,35	37,68	18,1	19,3	16,6	50	

TABLE OF DEVIATIONS
FROM NORMAL VALUES

STATION	TMEAN (deviation) (I)	PRECI (deviation %) (II)
SERRES	0.9	64
FLORINA		
THESSALONIKI	0.9	22
ALEXANDROUPOLI	-1	182
KOZANI	0.8	63
KERKYRA	1.2	43
IOANNINA	0.5	61
LARISA	0.9	19
LIMNOS	-0.6	155
AGHIALOS	0.4	31
MYTILINI	-0.8	300
AGRINIO		
SKYROS	-0.7	49
ARGOSTOLI	0.3	144
ARAXOS	0	121
HIOS	-0.9	208
HELLINIKO		
ZAKYNTHOS	0	57
SAMOS		
KALAMATA	-0.3	44
NAXOS	0	49
METHONI		
SANTORINI	1.1	17
SOUDA	0.8	6
RODOS	0	53
HERAKLIO	0.4	16
SITIA	0.2	0

(I) deviation of mean temperature from normal values
(II) deviation of monthly precipitation height from normal values %.

Climatic Bulletin

General Description

Precipitation amounts were lower than normal values. Meanwhile they were higher locally over Ionian, west and northeast mainland and eastern Aegean.
The mean temperature varied close by normal values.

Climatic Parameters :

- ❖ **Normal Values** : normal values for various parameters (temperature, precipitation, etc) are defined as mean values calculated for 30 years. These normal values are used as basis and represent the mean situation. They can be specified in 10 daily, monthly, seasonally and yearly level and are used for the trend comparison of 10 days, month, season or year as: rainy decameron, mild winter, cool August etc.

Measurement :

- ❖ **Precipitation**
1 mm = 1 litre/m²

Table Legend :

Tmean : Mean Temperature
TN : Minimum Temperature
TX : Maximum Temperature
RR : Precipitation height(mm)
INST : Sun Duration (hours)

UTC hours (Universal Time Coordinates) in Greece :

- ❖ Winter : UTC hour = local hour - 2
- ❖ Summer : UTC hour = local hour - 3

© Hellenic National Meteorological Service
Reproduction is prohibited without written authorization
14 El.Venizelou 16777
Helliniko, Athens
Greece