




Climatic Bulletin

February 2014

 **Max
temperature**

 **Min
temperature**

 **Mean
temperature**

 **Precipitation**

 **Sunshine
duration**

February was warm enough everywhere, mainly during the second decameron.

The mean precipitation amounts varied lower than normal values over most parts.

Meanwhile the number of days, in which gale force winds prevailed, was lower than normal.



ΕΘΝΙΚΗ
ΜΕΤΕΩΡΟΛΟΓΙΚΗ
ΥΠΗΡΕΣΙΑ

HELLENIC NATIONAL METEOROLOGICAL SERVICE



Temperature

First Decameron

Minimum:

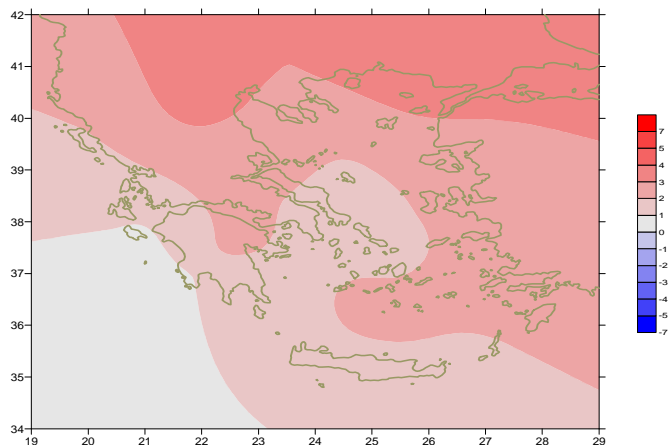
More specific (from the lowest) :

-2°C in Chrissoupoli at 1/2, -3.4°C in Serres at 3/2,
-2.6°C in Kastoria at 9/2.

Maximum:

More specific(from the highest):

20.3°C in Lamia, 20.7°C in Leonidio at 10/2,
21.2°C in Argos at 9/2.



Deviation of mean temperature from normal values

Second Decameron

Minimum:

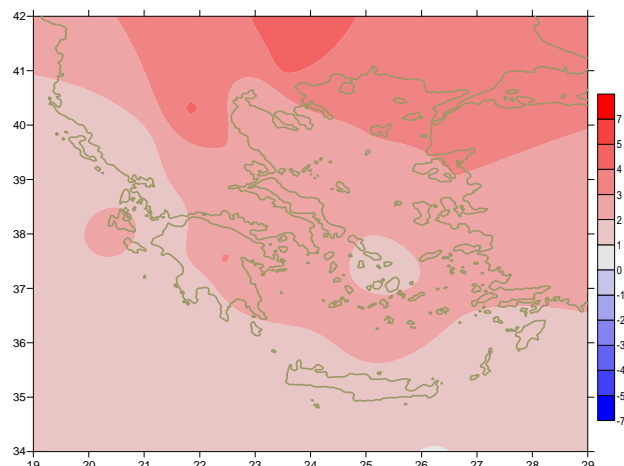
More specific (from the lowest) :

-1.2°C in Tripoli at 14/2,
-2.9°C in Kastoria, -1°C in Ioannina at 16/2.

Maximum:

More specific(from the highest):

22.6°C in Larissa, 21.6°C in Sitia at 18/2,
23.3°C in Florina at 19/2.



Deviation of maximum temperature from normal values

Third Decameron

Minimum:

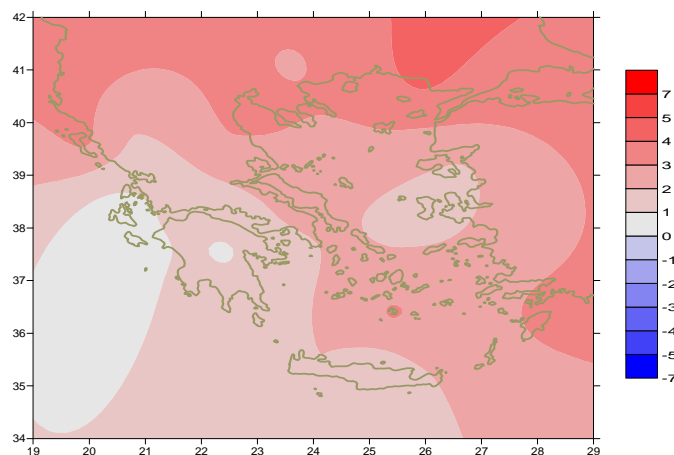
More specific (from the lowest) :

-4.1°C in Florina, -1.9°C in Ioannina at 27/2.

Maximum:

More specific (from the highest):

19.6 in Zakynthos, 19.4°C in Naxos at 21/2,
21.1°C in Argos at 22/2.



Deviation of minimum temperature from normal values



Precipitation

First Decameron

Significant local rainfalls .

More specific:

15mm in Milos (1/1),

18mm in Timbaki at 3/2, 63mm in Kerkyra at 6/2, 27mm in Adravidia at 6/2,

16 in Spata at 7/2, 12mm in Elefsina at 7/2.

Second Decameron

Local rainfalls.

More specific:

18mm in Konitsa at 12/2,

17mm in Samos at 13/2,

19mm in Preveza at 14/2.

Third Decameron

Significant local rainfalls .

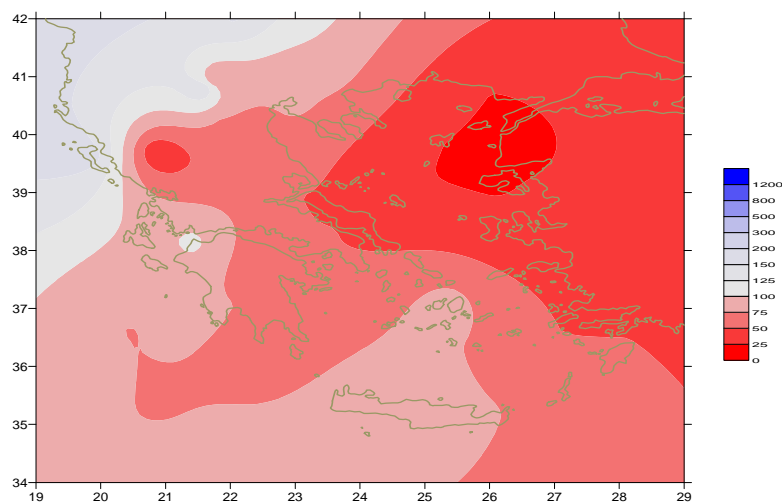
More specific:

22mm in Serres at 23/2,

23mm in Leonidio, 44mm in Rodos,

30mm in Araxos, 15mm in Elefsina at 24/2,

43mm in Kerkyra , 26mm in Zakynthos at 28/2.



*Deviation of monthly precipitation
height from normal values (%)*

STATION	Longitude	Latitude	Tmean	TX	TN	RR	INST
SERRES	23,53	41,07	9.3	14.9	4.3	36	102
FLORINA	21,40	40,78					
KASTORIA	21,27	40,45	7	12.7	0.8	32	106
TRIKALA_IMATHIAS	22,55	40,60					
THESSALONIKI	22,97	40,52	9.7	13	6	33	113
CHRYSOUPOLI	24,62	40,92	9.4	13.2	5.6	8	126
ALEXANDROUPOLI	25,95	40,85	9.7	12.9	6.2	6	122
KOZANI	21,83	40,28	7	12	2.2	21	
KERKYRA	19,92	39,62	12.2	12.5	8.9	217	98
IOANNINA	20,82	39,70	8.5	13	3.1	28	80
PREVEZA	20,76	38,91	12.4	15.7	9.4	78	
TRIKALA_THESSALIAS	21,77	39,52					
LARISA	22,45	39,65	9.6	14.9	4.4	17	106
LIMNOS	25,23	39,92	10.6	14	7.8	8	135
ARTA	21,00	39,17					
AGHIALOS	22,78	39,21	10.3	14.2	5.9	31	121
MYTILINI	26,60	39,05	12	15.6	8.8	4	128
VELO	22,77	37,97					
AGRINIO	21,35	38,60					
LAMIA	22,43	38,87					
ANDRAVIDA	21,28	37,92	11.6	16.1	7.6	123	144
SKYROS	24,48	38,96	12	14.6	9.9	6	141
ARGOSTOLI	20,50	38,12					
			12.9	16.7	8.8	117	178
ARAXOS	21,42	38,15	11.9	15.8	7.7	92	145
TANAGRA	23,57	38,33	10.2	15.3	5.7	23	130
HIOS	26,13	38,35	12	15.3	8	24	160
PYRGOS	21,42	37,67					
TRIPOLI	22,40	37,52	7.9	13.4	2.2	50	124
TATOI	23,78	38,10	10.3	14.7	6	18	
HELLINIKO	23,73	37,90					
ELEYSINA	23,55	38,07	11.8	16	7.6	29	
ZAKYNTHOS	20,88	37,75	12.3	16.4	8.8	95	124
SAMOS	26,92	37,68					
ARGOS	22,75	37,63					
KALAMATA	22,02	37,07	11.8	17.2	7.2	65	145
NAXOS	25,37	37,10	13.7	15.9	11.5	36	133
METHONI	21,70	36,82					
MHLOS	24,43	36,73					
SPATA	23,95	37,95	11.7	13.6	6.5	18	
KOS	27,08	36,80	13	15.7	11.1	51	
KYTHIRA	22,98	36,15					
SANTORINI	25,41	36,41	14.3	16.5	12.4	35	171
SOUDA	24,12	35,55	12.8	16.5	9.7	96	171
RODOS	28,08	36,40	14.4	17.1	11.9	56	165
MYKONOS	25,35	37,43	13	14.9	11.4	8	
HERAKLEIO	25,18	35,33	13.7	17.2	10.4	61	166
IERAPETRA	25,73	35,02					
SITEIA	26,10	35,21	13.8	16.8	11.3	50	
RETHYMNO	24,50	35,36					
TYMPAKI	24,76	35,06					
KASTELI	25,33	35,18	11.3	15.6	7.4	54	170
KARPATOS	27,15	35,42					
PAROS	25,13	37,02					
SYROS	24,95	37,42	13.3	16	11	13	154
IKARIA	26,35	37,68					

TABLE OF DEVIATIONS
FROM NORMAL VALUES

STATION	TMEAN (deviation) (I)	PRECI (deviation %) (II)
SERRES	3	85
FLORINA		
THESSALONIKI	3	82
ALEXANDROUPOLI	3.9	10
KOZANI	3.4	66
KERKYRA	1.9	160
IOANNINA	2.4	24
LARISA	2.8	49
LIMNOS	2.7	18
AGHIALOS	2.7	61
MYTILINI	2.2	4
AGRINIO		
SKYROS	1.8	10
ARGOSTOLI	1.2	103
ARAXOS	1.4	108
HIOS	2.2	29
HELLINIKO		
ZAKYNTHOS	0.8	84
SAMOS		
KALAMATA	1.1	64
NAXOS	1.6	61
METHONI		
SANTORINI	3.1	57
SOUDA	1.7	86
RODOS	2.4	47
HERAKLIO	1.5	79
SITIA	1.4	66

(I) deviation of mean temperature from normal values

(II) deviation of monthly precipitation height from normal values %.

Climatic Bulletin

General Description

Precipitation amounts were lower than normal values everywhere with exception of Northern Ionian and Northwest mainland where they were higher.

The mean temperature varied higher than normal values over every part of Greece.

Climatic Parameters :

- ❖ **Normal Values** : normal values for various parameters (temperature, precipitation, etc) are defined as mean values calculated for 30 years. These normal values are used as basis and represent the mean situation. They can be specified in 10 daily, monthly, seasonally and yearly level and are used for the trend comparison of 10 days, month, season or year as: rainy decameron, mild winter, cool August etc.

Measurement :

- ❖ **Precipitation**
1 mm = 1 litre/m²

Table Legend :

Tmean : Mean Temperature
 TN : Minimum Temperature
 TX : Maximum Temperature
 RR : Precipitation height(mm)
 INST : Sun Duration (hours)

UTC hours (Universal Time Coordinates) in Greece :

- ❖ Winter : UTC hour = local hour - 2
- ❖ Summer : UTC hour = local hour - 3

© Hellenic National Meteorological Service
 Reproduction is prohibited without written authorization
 14 El.Venizelou 16777
 Helliniko, Athens
 Greece