




# Climatic Bulletin

April 2014

 **Max  
temperature**

 **Min  
temperature**

 **Mean  
temperature**

 **Precipitation**

 **Sunshine  
duration**

The main characteristic of April was the alternation of periods of strong rainfalls, thunderstorms, snowfalls (ten days in the middle of month and last five days) and periods with high temperatures during of which the atmosphere was "full" of dust from Africa.



ΕΘΝΙΚΗ  
**ΜΕΤΕΩΡΟΛΟΓΙΚΗ**  
ΥΠΗΡΕΣΙΑ

HELLENIC NATIONAL METEOROLOGICAL SERVICE



# Temperature

### First Decameron

**Minimum: relatively high**

More specific (from the lowest) :

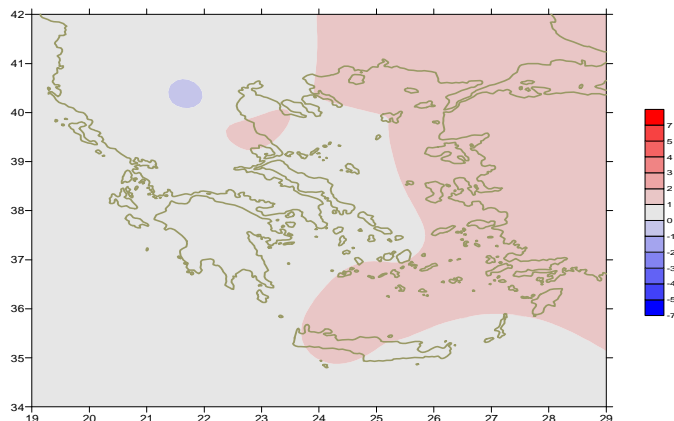
4.6°C in Limnos, 5.3°C in Ioannina at 9/4.

**Maximum:**

More specific( from the highest):

23.4°C in Mitilini,

22.6°C in Alexandroupoli at 6/4.



*Deviation of mean temperature from normal values*

### Second Decameron

**Minimum:**

More specific (from the lowest) :

-1.4°C in Kastoria,

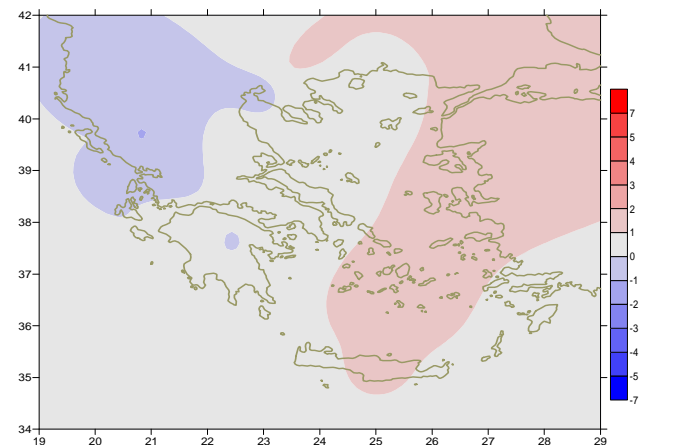
-2.9°C in Florina, 0°C in Tripoli at 14/4.

**Maximum:**

More specific( from the highest):

21.8°C in Serres, 23.1°C in Leonidio,

23.3°C in Lamia at 14/4.



*Deviation of maximum temperature from normal values*

### Third Decameron

**Minimum: relatively high**

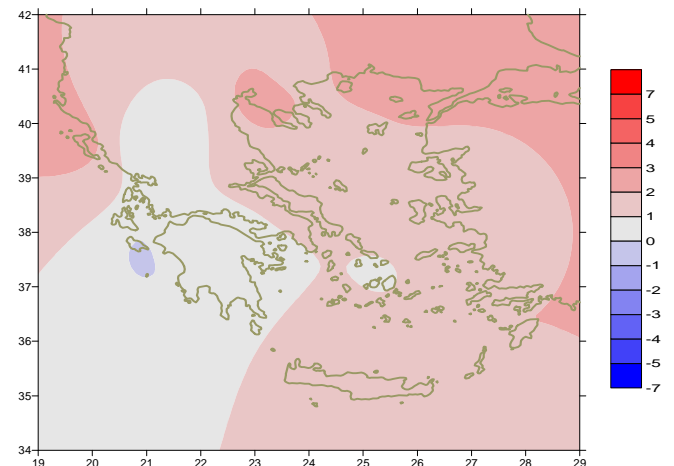
More specific (from the lowest) :

6°C in Kozani, 6.9°C in Tripoli at 21/4.

**Maximum:**

More specific (from the highest):

34°C in Iraklio, 33°C in Ierapetra at 22/4.



*Deviation of minimum temperature from normal values*



## P r e c i p i t a t i o n

### First Decameron

Significant local rainfalls and thunderstorms.

More specific:

*35mm in Araxos, 14mm in Tripoli at 6/4,  
28mm in Aghialos, 18mm in Methoni, 28mm in Kos,  
30mm in Paros at 7/4.*

### Second Decameron

Significant local rainfalls and thunderstorms.

More specific:

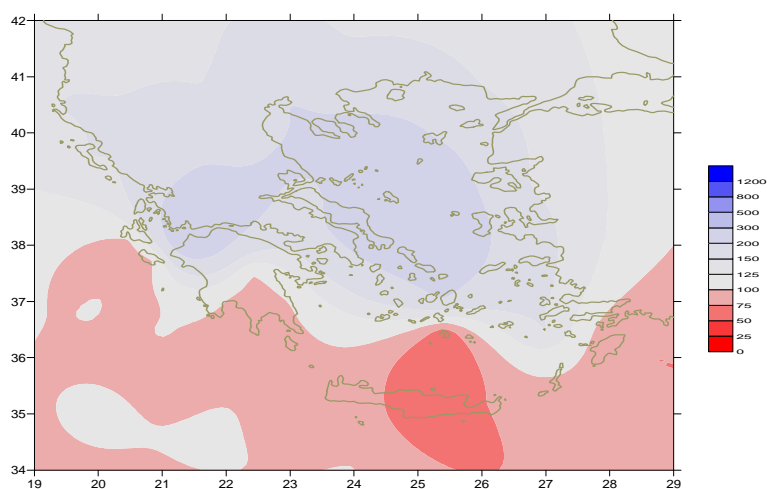
*23mm in Ioannina at 16/4,  
22mm in Limnos, 104mm in Karistos, 33mm in Chios at 17/4,  
44mm in Chrissoupoli, 32mm in Mitilini,  
28mm in Samos at 18/4.*

### Third Decameron

Significant local rainfalls and thunderstorms.

More specific:

*70mm in Edessa at 26/4,  
30mm in Skyros, 17mm in Tatoi at 27/4,  
19mm in Kerkyra, 57mm in Preveza at 28/4..*



*Deviation of monthly precipitation  
height from normal values (%)*

STATION	Longitude	Latitude	Tmean	TX	TN	RR	INST
SERRES	23,53	41,07	15,2	20,9	9,4	53	160
FLORINA	21,40	40,78					
KASTORIA	21,27	40,45	11,9	17,2	5,6	73	135
TRIKALA_IMATHIAS	22,55	40,60					
THESSALONIKI	22,97	40,52	15,1	18,8	9,9	64	166
CHRYSOUPOLI	24,62	40,92	14,6	17,7	10,7	125	170
ALEXANDROUPOLI	25,95	40,85	14,8	18,3	9,9	54	195
KOZANI	21,83	40,28	11,7	16,5	6	77	
KERKYRA	19,92	39,62	15,8	19,2	11,8	78	174
IOANNINA	20,82	39,70	12,6	17	6,2	93	127
PREVEZA	20,76	38,91	15,9	19,5	12	168	
TRIKALA_THESSALIAS	21,77	39,52					
LARISA	22,45	39,65	15,1	20,6	7,6	44	184
LIMNOS	25,23	39,92	14,8	17,8	10,6	64	181
ARTA	21,00	39,17					
AGHIALOS	22,78	39,21	15,2	19,2	9,2	84	180
MYTILINI	26,60	39,05	17,3	21,3	12,7	72	220
VELO	22,77	37,97					
AGRINIO	21,35	38,60					
LAMIA	22,43	38,87					
ANDRAVIDA	21,28	37,92	15,8	19,8	10,6	47	220
SKYROS	24,48	38,96	16	18,7	13	62	178
ARGOSTOLI	20,50	38,12	15,5	18,3	12,3	15	124
ARAXOS	21,42	38,15	15,8	19,5	10,7	96	214
TANAGRA	23,57	38,33	15,3	20,2	8,4	46	202
HIOS	26,13	38,35	16,5	19,9	11,6	65	236
PYRGOS	21,42	37,67					
TRIPOLI	22,40	37,52	12	17,2	5,1	46	
TATOI	23,78	38,10	15,2	19,6	8,6	67	
HELLINIKO	23,73	37,90					
ELEYSINA	23,55	38,07	16,9	21,6	10,3	41	
ZAKYNTHOS	20,88	37,75	15,9	19,9	10,9	37	213
SAMOS	26,92	37,68					
ARGOS	22,75	37,63					
KALAMATA	22,02	37,07	15,5	20,9	9,1	32	214
NAXOS	25,37	37,10	16,9	19,8	13,3	39	249
METHONI	21,70	36,82					
MHLOS	24,43	36,73					
SPATA	23,95	37,95	14,5	18,8	9,5	34	
KOS	27,08	36,80	15,9	18,6	12,7	53	
KYTHIRA	22,98	36,15					
SANTORINI	25,41	36,41	17,3	20,2	14	9	257
SOUDA	24,12	35,55	17	20,8	12,9	28	280
RODOS	28,08	36,40	17,8	20,6	14,6	18	274
MYKONOS	25,35	37,43	16,1	18,6	14	17	
HERAKLEIO	25,18	35,33	17,6	21,6	13,1	8	250
IERAPETRA	25,73	35,02					
SITEIA	26,10	35,21	17,5	21	13,7	19	
RETHYMNO	24,50	35,36					
TYMPAKI	24,76	35,06					
KASTELI	25,33	35,18	15,8	20	10,6	18	248
KARPATOS	27,15	35,42	18	20,1	15,5	4	
PAROS	25,13	37,02					
SYROS	24,95	37,42	16,5	20,9	12,9	41	256
IKARIA	26,35	37,68	18,1	20,4	15,7	40	

TABLE OF DEVIATIONS  
FROM NORMAL VALUES

STATION	TMEAN ( deviation ) (I)	PRECI ( deviation % ) (II)
SERRES	0.9	149
FLORINA		
THESSALONIKI	0.9	136
ALEXANDROUPOLI	1.6	136
KOZANI	-0.2	191
KERKYRA	0.7	126
IOANNINA	0	122
LARISA	1.1	152
LIMNOS	1	198
AGHIALOS	1	244
MYTILINI	1.5	153
AGRINIO		
SKYROS	0.8	282
ARGOSTOLI	0.1	25
ARAXOS	0.4	231
HIOS	1.2	158
HELLINIKO		
ZAKYNTHOS	0.4	72
SAMOS		
KALAMATA	0.1	67
NAXOS	0.8	212
METHONI		
SANTORINI	1.7	47
SOUDA	1.2	88
RODOS	1.1	75
HERAKLIO	1	27
SITIA	0.7	69

(I) deviation of mean temperature from normal values  
(II) deviation of monthly precipitation height from normal values %.

# Climatic Bulletin

## General Description

Precipitation amounts were higher than normal values everywhere with exception of southern mainland, of south Aegean and south Ionian area where they were lower.  
The mean temperature varied near by the normal values over every part of Greece.

### Climatic Parameters :

- ❖ **Normal Values** : normal values for various parameters (temperature, precipitation, etc) are defined as mean values calculated for 30 years. These normal values are used as basis and represent the mean situation. They can be specified in 10 daily, monthly, seasonally and yearly level and are used for the trend comparison of 10 days, month, season or year as: rainy decameron, mild winter, cool August etc.

### Measurement :

- ❖ **Precipitation**  
1 mm = 1 litre/m<sup>2</sup>

### Table Legend :

Tmean : Mean Temperature  
TN : Minimum Temperature  
TX : Maximum Temperature  
RR : Precipitation height(mm)  
INST : Sun Duration (hours)

### UTC hours (Universal Time Coordinates) in Greece :

- ❖ Winter : UTC hour = local hour - 2
- ❖ Summer : UTC hour = local hour - 3

© Hellenic National Meteorological Service  
Reproduction is prohibited without written authorization  
14 El.Venizelou 16777  
Helliniko, Athens  
Greece