




Climatic Bulletin

July 2015

 **Max
temperature**

 **Min
temperature**

 **Mean
temperature**

 **Precipitation**

 **Sunshine
duration**

July was a relatively cool month in the beginning but a hot one at the end.

A great number of locally strong rainfalls and thunderstorms took place over mainland.

It is remarkable that the weakened wind field over Greece contributed to the formation of fog above Aegean sea for a couple of days (25-26/7).



ΕΘΝΙΚΗ
ΜΕΤΕΩΡΟΛΟΓΙΚΗ
ΥΠΗΡΕΣΙΑ

HELLENIC NATIONAL METEOROLOGICAL SERVICE



Temperature

First Decameron

More specific (varied) :

Minimum:

from 8°C to 22°C over north mainland,
from 12°C to 24°C over central mainland,
from 16°C to 24°C over rest parts.

Maximum:

from 27°C to 34°C over north mainland,
from 30°C to 37°C over central mainland,
from 25°C to 35°C over rest parts.

Second Decameron

More specific (varied) :

Minimum:

from 11°C to 22°C over North mainland,
from 17°C to 24°C over central mainland,
from 18°C to 25°C over rest parts.

Maximum:

from 28°C to 38°C over north mainland,
from 30°C to 38°C over central mainland,
from 27°C to 35°C over rest parts.

Third Decameron

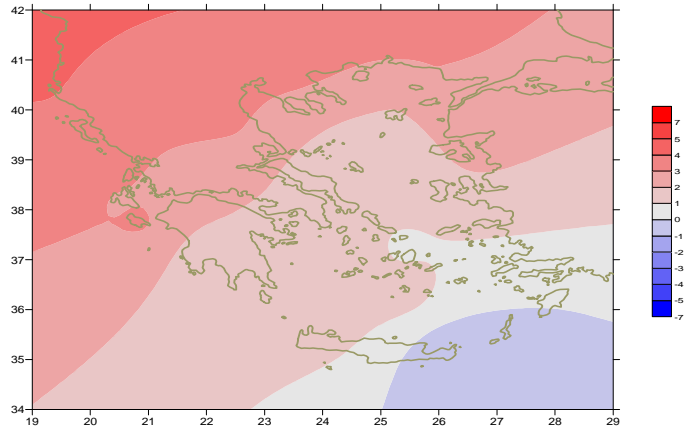
More specific (varied) :

Minimum:

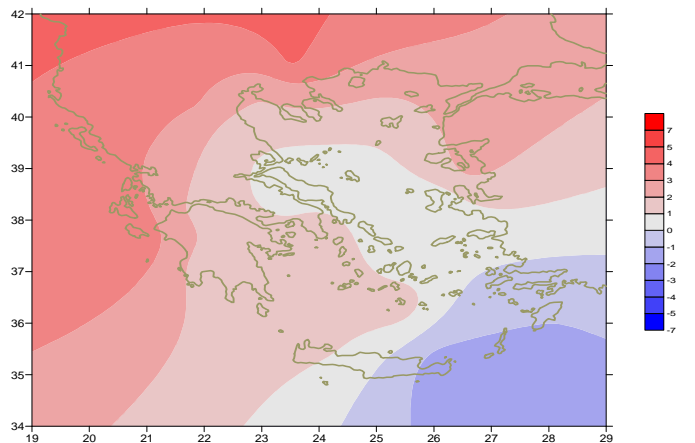
from 13°C to 23°C over north mainland,
from 18°C to 28°C over central mainland,
from 20°C to 26°C over rest parts.

Maximum:

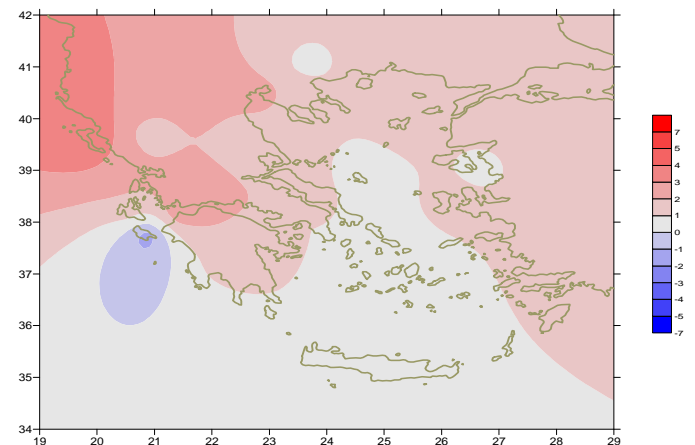
from 27°C to 41°C over north mainland,
from 29°C to 40°C over central mainland,
from 25°C to 39°C over rest parts.



Deviation of mean temperature from normal values



Deviation of maximum temperature from normal values



Deviation of minimum temperature from normal values



Precipitation

First Decameron

Local precipitation in the beginning and at the end of the period.

More specific:

*13mm in Chrissoupoli, 20mm in Tripoli (1/7),
3mm in Kastoria, 3mm in Konitsa (9/7),
9mm in Lamia, 12mm in Alexandroupoli,
17mm in Kastoria.*

Second Decameron

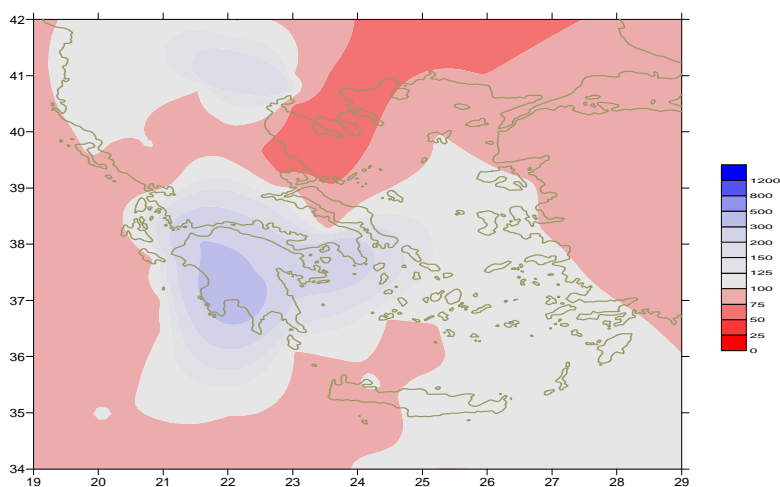
Not remarkable precipitation from the existing met.stations.

Third Decameron

Temporarily local precipitation.

More specific:

*55mm in Ioannina (24/7),
37mm in Konitsa, 8mm in Kozani(25/7),
11mm in Sofathes (25/7).*



*Deviation of monthly precipitation
height from normal values (%)*

TABLE OF MEAN VALUES

STATION	Longitude	Latitude	Tmean	TX	TN	RR	INST
SERRES	23,53	41,07	28,6	36,1	19,1	4	250
FLORINA	21,40	40,78					
KASTORIA	21,27	40,45	26,3	32,3	15,9	23	348
TRIKALA_IMATHIAS	22,55	40,60					
THESSALONIKI	22,97	40,52	29	33,6	20,7	5	381
CHRYSOUPOLI	24,62	40,92	26,7	30,8	19,9	14	356
ALEXANDROUPOLI	25,95	40,85	28,2	32,7	19,2	12	366
KOZANI	21,83	40,28	26,8	32,4	17,9	33	
KERKYRA	19,92	39,62	30	34,4	22,3	0	381
IOANNINA	20,82	39,70	27,4	34,3	16,4	8	349
PREVEZA	20,76	38,91	28,3	32,6	22,4	0	
TRIKALA_THESSALIAS	21,77	39,52					
LARISA	22,45	39,65	29,2	34,6	19,2	6	345
LIMNOS	25,23	39,92	26,5	30,3	21,1	0	391
ARTA	21,00	39,17					
AGHIALOS	22,78	39,21	28,3	32,1	20,2	3	365
MYTILINI	26,60	39,05	28,2	32,7	22,4	0	421
VELO	22,77	37,97					
AGRINIO	21,35	38,60					
LAMIA	22,43	38,87					
ANDRAVIDA	21,28	37,92					
SKYROS	24,48	38,96	26	28,2	22	0	366
ARGOSTOLI	20,50	38,12	28,6	32,3	22	0	396
ARAXOS	21,42	38,15	29,2	33,3	21,4	11	377
TANAGRA	23,57	38,33	28,2	32,2	20	3	395
HIOS	26,13	38,35	27,1	30,4	22,2	0	387
PYRGOS	21,42	37,67					
TRIPOLI	22,40	37,52	25,7	32	15,8	20	216
TATOI	23,78	38,10	28	32,1	20,7	2	
HELLINIKO	23,73	37,90	29,3	33,4	23,8	14	378
ELEYSINA	23,55	38,07	30	34	23,6	0	
ZAKYNTHOS	20,88	37,75	29,8	34,7	18,9	0	410
SAMOS	26,92	37,68					
ARGOS	22,75	37,63					
KALAMATA	22,02	37,07	27,5	32,7	19,4	11	374
NAXOS	25,37	37,10	25,2	27	22,1	0	406
METHONI	21,70	36,82					
MHLOS	24,43	36,73					
SPATA	23,95	37,95	27,1	31,6	21,2	0	
KOS	27,08	36,80					
KYTHIRA	22,98	36,15					
SANTORINI	25,41	36,41	26,6	30,1	22,4	0	374
SOUDA	24,12	35,55	27,3	31,5	21,5	0	396
RODOS	28,08	36,40	27,1	29,7	23,6	0	397
MYKONOS	25,35	37,43	25,7	28,6	22,2	0	
HRAKLEIO	25,18	35,33	26,3	28,6	22,1	0	389
IERAPETRA	25,73	35,02					
SITEIA	26,10	35,21	25	27	22,5	0	385
RETHYMNO	24,50	35,36					
TYMPAKI	24,76	35,06					
KASTELI	25,33	35,18	25,2	29	19,9	0	368
KARPATOS	27,15	35,42	25,7	28,8	23,2	0	
PAROS	25,13	37,02					
SYROS	24,95	37,42	26,5	29,2	22,9	0	394
IKARIA	26,35	37,68	24,9	27,3	23	0	

**TABLE OF DEVIATIONS
FROM NORMAL VALUES**

STATION	TMEAN (deviation) (I)	PRECI (deviation %) (II)
SERRES	2.5	13
FLORINA		
THESSALONIKI	2.5	20
ALEXANDROUPOLI	2.6	68
KOZANI	2.8	85
KERKYRA	3.6	-
IOANNINA	2.6	28
LARISA	2.1	30
LIMNOS	1	-
AGHIALOS	1.6	17
MYTILINI	1.8	-
AGRINIO		
SKYROS	0.7	-
ARGOSTOLI	3.1	-
ARAXOS	2.6	256
HIOS	0.7	-
HELLINIKO	1.5	250
ZAKYNTHOS	3.1	-
SAMOS		
KALAMATA	1	314
NAXOS	0.5	-
METHONI		
SANTORINI	1.2	-
SOUDA	0.9	-
RODOS	0.2	-
HERAKLIO	0.2	-
SITIA	-1	-

(I) deviation of mean temperature from normal values

(II) deviation of monthly precipitation height from normal values %.

Climatic Bulletin

General Description

Precipitation amounts were lower than normal values with the exception of few parts of mainland.
The mean temperature varied higher than normal Values over mainland and Ionion sea area.

Climatic Parameters :

- ❖ **Normal Values** : normal values for various parameters (temperature, precipitation, etc) are defined as mean values calculated for 30 years. These normal values are used as basis and represent the mean situation. They can be specified in 10 daily, monthly, seasonally and yearly level and are used for the trend comparison of 10 days, month, season or year as: rainy decameron, mild winter, cool August etc.

Measurement :

- ❖ **Precipitation**
1 mm = 1 litre/m²

Table Legend :

Tmean : Mean Temperature
TN : Minimum Temperature
TX : Maximum Temperature
RR : Precipitation height(mm)
INST : Sun Duration (hours)

UTC hours (Universal Time Coordinates) in Greece :

- ❖ Winter : UTC hour = local hour - 2
- ❖ Summer : UTC hour = local hour - 3

© Hellenic National Meteorological Service
Reproduction is prohibited without written authorization
14 El.Venizelou 16777
Helliniko, Athens
Greece