



Climatic Bulletin

August 2017

 **Max
temperature**

 **Min
temperature**

 **Mean
temperature**

 **Precipitation**

 **Sunshine
duration**

August recorded as a hot month mainly over west and north parts. In parallel the precipitation amounts were far behind of those of the corresponding period. Meanwhile the gusts of northern winds prevailed over eastern parts mitigated the feeling of general discomfort.



ΕΘΝΙΚΗ
ΜΕΤΕΩΡΟΛΟΓΙΚΗ
ΥΠΗΡΕΣΙΑ

HELLENIC NATIONAL METEOROLOGICAL SERVICE



Temperature

First 10-day period

More specific (varied) :

Minimum:

from 12°C to 24°C over north mainland,
from 17°C to 30°C over central mainland,
from 17°C to 29°C over rest parts.

Maximum:

from 32°C to 41.4°C over north mainland,
from 28°C to 41°C over central mainland,
from 27°C to 40°C over rest parts.

Second 10-day period

More specific (varied) :

Minimum:

from 12°C to 23°C over north mainland,
from 17°C to 28°C over central mainland,
from 16°C to 26°C over rest parts.

Maximum:

from 27°C to 39°C over north mainland,
from 28°C to 37°C over central mainland,
from 29°C to 39°C over rest parts.

Third 10-day period

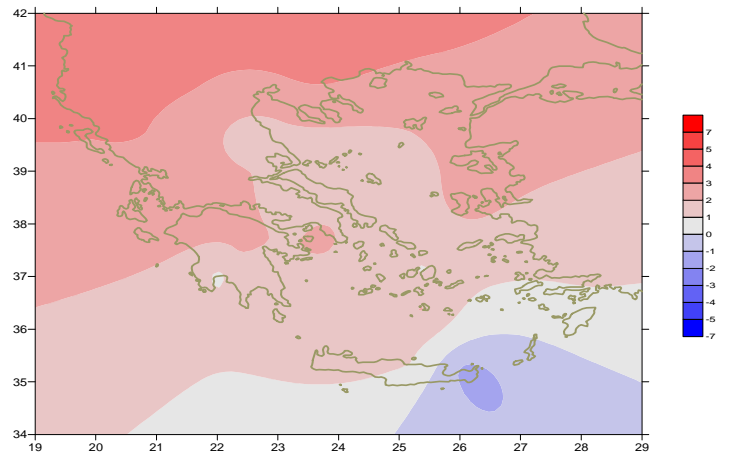
More specific (varied) :

Minimum:

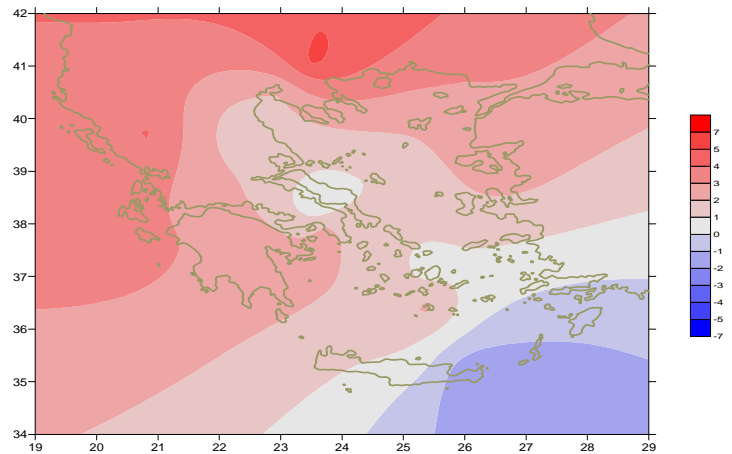
from 9°C to 20°C over north mainland,
From 14°C to 26°C over central mainland,
from 15°C to 25°C over rest parts.

Maximum:

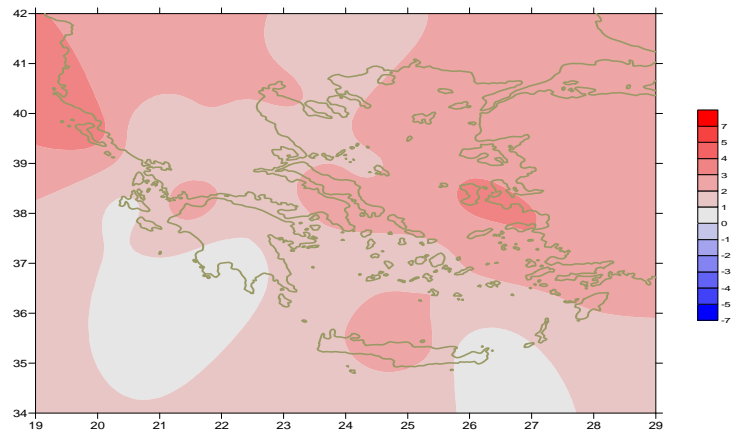
from 27°C to 38°C over north mainland,
from 27°C to 36°C over central mainland,
From 26°C to 36°C over rest parts.



Deviation of mean temperature from normal values



Deviation of maximum temperature from normal values



Deviation of minimum temperature from normal values



P r e c i p i t a t i o n

First 10-day period

Few local precipitation over northwest mainland.

More specific:

1mm in Edessa (7/8),

9mm in Kastoria (8/8).

Second 10-day period

Luck of precipitation almost everywhere.

Third 10-day period

Significant precipitation temporarily.

More specific:

26mm in Florina, 9mm in Tanagra, 4mm in Larissa,

4mm in Spata, 2mm in Tatoi (21/8),

5mm in Chrisoupoli, 7mm in Alexandroupoli,

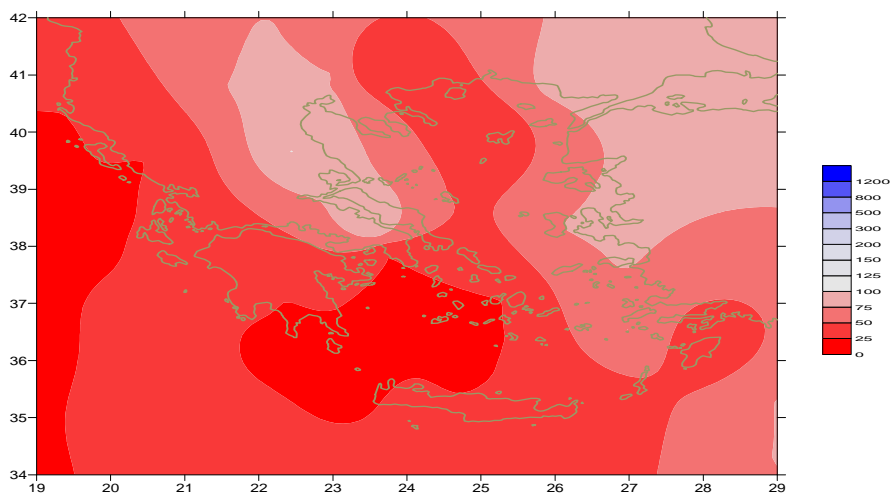
13mm in Ormenio (22/8),

20mm in Kastoria, 13mm in Konitsa (29/8),

13mm in Thessaloniki, 9mm in Kozani, 10mm in Larisa,

17mm in Aghialos, 15mm in Adravida, 4mm in Skyros,

4mm in Skiathos, 7mm in Tithorea, 5mm in Oreoi (30/8).



Deviation of monthly precipitation height from normal values (%)

TABLE OF MEAN VALUES

STATION	Longitude	Latitude	Tmean	TX	TN	RR	INST
SERRES	23,53	41,07	28,6	36,3	18,8	1	337
FLORINA	21,40	40,78					
KASTORIA	21,27	40,45	25	32,1	14,6	30	321
TRIKALA_IMATHIAS	22,55	40,60					
THESSALONIKI	22,97	40,52	28,3	33	20,4	17	346
CHRYSOUPOLI	24,62	40,92	27	32	19,8	5	338
ALEXANDROUPOLI	25,95	40,85	28	33,3	19,4	9	354
KOZANI	21,83	40,28	26,2	31,4	17,5	24	
KERKYRA	19,92	39,62	29,1	34,3	22,2	0	351
IOANNINA	20,82	39,70	27,2	34,9	16	1	310
PREVEZA	20,76	38,91	28	33,2	20,5	0	
TRIKALA_THESSALIAS	21,77	39,52					
LARISA	22,45	39,65	27,5	33,5	18,4	15	332
LIMNOS	25,23	39,92	26,7	30,4	22,4	0	351
ARTA	21,00	39,17					
AGHIALOS	22,78	39,21	27,9	32,5	20,1	16	341
MYTILINI	26,60	39,05	28,1	32,5	23,5	3	369
VELO	22,77	37,97					
AGRINIO	21,35	38,60					
LAMIA	22,43	38,87					
ANDRAVIDA	21,28	37,92	27,5	32,5	19,3	15	356
SKYROS	24,48	38,96	26	28,2	23,3	5	
ARGOSTOLI	20,50	38,12	28,4	32,5	21,6	0	364
ARAXOS	21,42	38,15	29,4	34,1	21,9	0	345
TANAGRA	23,57	38,33	27,6	31,7	20,1	9	364
HIOS	26,13	38,35	27,9	31	23,8	0	354
PYRGOS	21,42	37,67					
TRIPOLI	22,40	37,52	26	32,7	15,4	2	329
TATOI	23,78	38,10	27,8	31,8	22,5	2	
HELLINIKO	23,73	37,90	29,8	33,6	24,7	0	374
ELEYSINA	23,55	38,07	30,3	34	25	0	
ZAKYNTHOS	20,88	37,75	29,2	34,1	22,3	2	384
SAMOS	26,92	37,68	29,2	33	24,9	0	
ARGOS	22,75	37,63					
KALAMATA	22,02	37,07	27,1	33,7	18,7	2	326
NAXOS	25,37	37,10	25,3	26,8	23,3	0	367
METHONI	21,70	36,82					
MHLOS	24,43	36,73					
SPATA	23,95	37,95	28,8	31,9	23,5	5	
KOS	27,08	36,80	26,8	30,8	23,4	0	
KYTHIRA	22,98	36,15					
SANTORINI	25,41	36,41	26,9	30	23,6	0	348
SOUDA	24,12	35,55	27,2	31,1	22,6	0	345
RODOS	28,08	36,40	27,7	30,1	24,9	0	344
MYKONOS	25,35	37,43	25,6	28,1	23	0	
HRAKLEIO	25,18	35,33	26,9	28,9	24,2	0	344
IERAPETRA	25,73	35,02					
SITEIA	26,10	35,21	24,5	26,6	22,4	0	312
RETHYMNO	24,50	35,36					
TYMPAKI	24,76	35,06					
KASTELI	25,33	35,18	24,7	28,2	21,8	0	328
KARPATHOS	27,15	35,42	26,3	28,9	24,4	0	
PAROS	25,13	37,02	26,6	37,1	23,2	0	336
SYROS	24,95	37,42					
IKARIA	26,35	37,68					

**TABLE OF DEVIATIONS
FROM NORMAL VALUES**

STATION	TMEAN (deviation) (I)	PRECI (deviation %) (II)
SERRES	3.7	4
FLORINA		
THESSALONIKI	2.5	82
ALEXANDROUPOLI	2.8	85
KOZANI	2.8	77
KERKYRA	3	1
IOANNINA	3	4
LARISA	1.5	97
LIMNOS	2.1	1
AGHIALOS	2	86
MYTILINI	2.2	73
AGRINIO		
SKYROS	1.2	49
ARGOSTOLI	2.7	0
ARAXOS	2.8	0
HIOS	2.3	0
HELLINIKO	2.2	1
ZAKYNTHOS	2.6	22
SAMOS	1.5	0
KALAMATA	0.9	19
NAXOS	0.9	0
METHONI		
SANTORINI	2.1	0
SOUDA	1.4	0
RODOS	0.8	10
HERAKLIO	1	0
SITIA	-1.3	0

(I) deviation of mean temperature from normal values
(II) deviation of monthly precipitation height from normal values %.

Climatic Bulletin

General Description

Precipitation amounts were lower than normals mainly over west and north parts.
The mean temperature varied higher enough than normal values almost everywhere.

Climatic Parameters :

- ❖ **Normal Values** : normal values for various parameters (temperature, precipitation, etc) are defined as mean values calculated for 30 years. These normal values are used as basis and represent the mean situation. They can be specified in 10 daily, monthly, seasonally and yearly level and are used for the trend comparison of 10 days, month, season or year as: rainy decameron, mild winter, cool August etc.

Measurement :

- ❖ **Precipitation**
1 mm = 1 litre/m²

Table Legend :

Tmean : Mean Temperature
TN : Minimum Temperature
TX : Maximum Temperature
RR : Precipitation height(mm)
INST : Sun Duration (hours)

UTC hours (Universal Time Coordinates) in Greece :

- ❖ Winter : UTC hour = local hour - 2
- ❖ Summer : UTC hour = local hour - 3

© Hellenic National Meteorological Service
Reproduction is prohibited without written authorization
14 El.Venizelou 16777
Helliniko, Athens
Greece