




Climatic Bulletin

March 2018

 **Max
temperature**

 **Min
temperature**

 **Mean
temperature**

 **Precipitation**

 **Sunshine
duration**

The first few days of March were cold enough over northwestern mainland. However the mean temperature values exceeded the normal ones everywhere. Meanwhile the precipitation amounts were high only over Ipirus.

It is remarkable that two significant dust episodes took place at the end of month. Namely large amounts of dust from northern Africa transferred to Greek area affecting the whole country or parts of it on the 22th and 25-26th of March.



ΕΘΝΙΚΗ
ΜΕΤΕΩΡΟΛΟΓΙΚΗ
ΥΠΗΡΕΣΙΑ

HELLENIC NATIONAL METEOROLOGICAL SERVICE



Temperature

First 10-day period

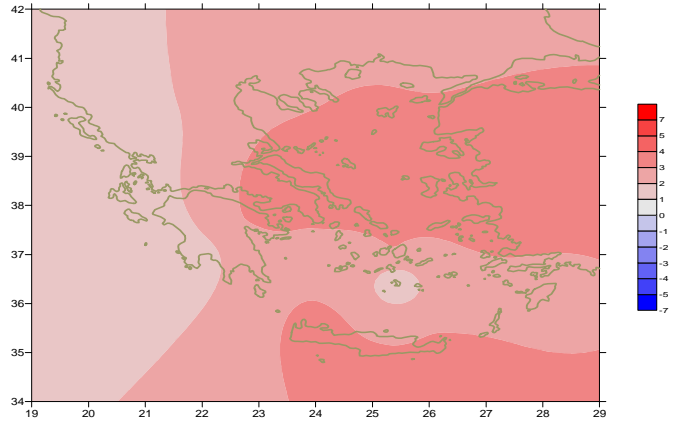
More specific (varied) :

Minimum:

from -8°C to 11°C over north mainland,
 from -2°C to 12°C over central mainland,
 from -1°C to 15°C over rest parts.

Maximum:

from -0.7°C to 22°C over north mainland,
 from 6°C to 21°C over central mainland,
 from 8°C to 24°C over rest parts.



Deviation of mean temperature from normal values

Second 10-day period

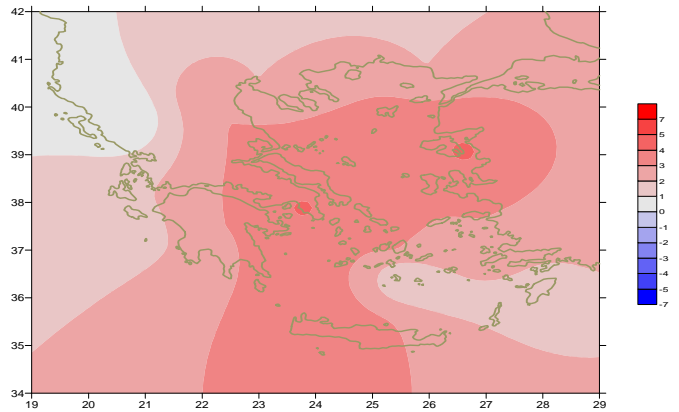
More specific (varied) :

Minimum:

from -2°C to 11°C over north mainland,
 from 2°C to 14°C over central mainland,
 from 3°C to 16°C over rest parts.

Maximum:

from 14°C to 23°C over north mainland,
 from 16°C to 25°C over central mainland,
 from 15°C to 25°C over rest parts.



Deviation of maximum temperature from normal values

Third 10-day period

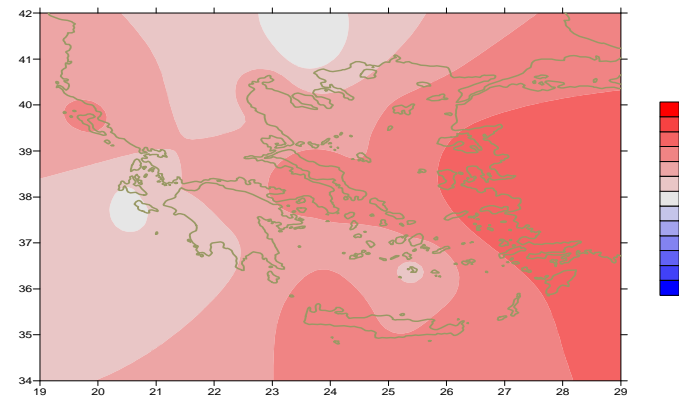
More specific (varied) :

Minimum:

from -1°C to 10°C over north mainland,
 From 0°C to 15°C over central mainland,
 from 3°C to 18°C over rest parts.

Maximum:

from 0°C to 23°C over north mainland,
 from 10°C to 22°C over central mainland,
 From 12°C to 27°C over rest parts.



Deviation of minimum temperature from normal values



Precipitation

First 10-day period

Remarkable precipitation locally over north parts.

More specific:

17mm in Konitsa (2/3), 13mm in Alexandroupoli, 8mm in Soufli (3/3), 14mm in Ioannina, 8mm in Mitilini, 6mm in Xanthi (6/3), 20mm in Kerkira, 15mm in Ioannina (8/3).

Second 10-day period

Significant precipitation locally over north and central parts.

More specific:

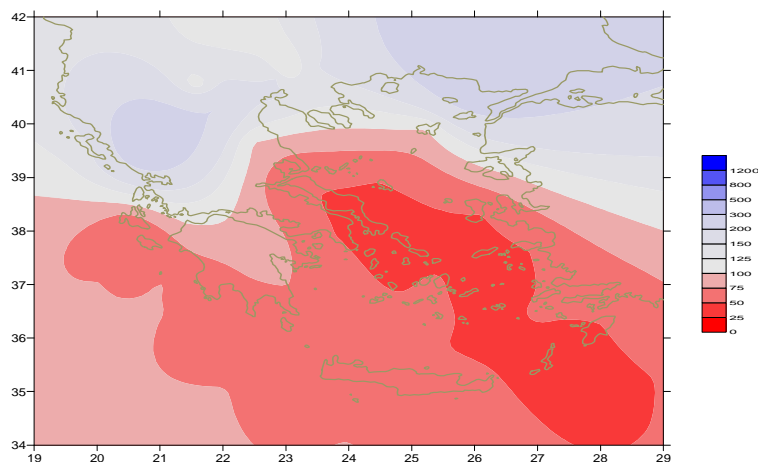
18mm in Konitsa (18/3), 13mm in Kastoria, 20mm in Kerkira, 18mm in Ioannina, 7mm in Tripoli (19/3), 23mm in Alexandroupoli, 21mm in Limnos, 18mm in Xanthi, 8mm in Fourni, 6mm in Hellinikon, 6mm in N. Filadelfia, 6mm in Agios Efstratios (20/3).

Third 10-day period

Significant precipitation over most parts.

More specific:

27 mm in Ioannina (21/3), 19mm in Florina, 17mm in Thessaloniki, 22mm in Ioannina, 14mm in Antirio (23/3), 23mm in Alexandroupoli, 15mm in Kos, 14mm in Strofades (24/3), 15mm in Mitilini, 15mm in Samos, 15mm in Araxos, 14mm in Kimi (25/3), 35mm in Alexandroupoli, 29mm in Ioannina, 24mm in Konitsa, 21mm in Kerkira, 19mm in Ormenio, 26mm in Doxato (26/3), 20mm in Argos (27/3), 18mm in Alexandroupoli, 26mm in Kithnos (28/3).



Deviation of monthly precipitation height from normal values (%)

TABLE OF MEAN VALUES

STATION	Longitude	Latitude	Tmean	TX	TN	RR	INST
SERRES	23,53	41,07					
FLORINA	21,40	40,78					
KASTORIA	21,27	40,45	9	14.3	2.8	100	162
TRIKALA_IMATHIAS	22,55	40,60					
THESSALONIKI	22,97	40,52	12.2	16.2	7.1	57	174
CHRYSOUPOLI	24,62	40,92					
ALEXANDROUPOLI	25,95	40,85	11	14.3	6.5	137	160
KOZANI	21,83	40,28	9.3	14.2	3.5	62	
KERKYRA	19,92	39,62	13.8	16.9	10.1	103	148
IOANNINA	20,82	39,70	10	14.7	5.6	186	116
PREVEZA	20,76	38,91	14	17.3	10.1	52	
TRIKALA_THESSALIAS	21,77	39,52					
LARISA	22,45	39,65	12.2	17.9	5.3	26	181
LIMNOS	25,23	39,92	13.3	16.3	9.5	43	173
ARTA	21,00	39,17					
AGHIALOS	22,78	39,21	12.9	17.7	7.2	27	200
MYTILINI	26,60	39,05	15.6	19	12.6	50	164
VELO	22,77	37,97					
AGRINIO	21,35	38,60					
LAMIA	22,43	38,87					
ANDRAVIDA	21,28	37,92	14.2	18.5	9.6	58	177
SKYROS	24,48	38,96	14.7	17.6	11.8	18	185
ARGOSTOLI	20,50	38,12	14.4	17.9	10.5	41	178
ARAXOS	21,42	38,15	14.1	18.4	9.6	40	191
TANAGRA	23,57	38,33	14.1	18.6	8.3	8	197
HIOS	26,13	38,35	15.2	18.1	11.6	20	184
PYRGOS	21,42	37,67					
TRIPOLI	22,40	37,52	10.8	16	5.1	50	191
TATOI	23,78	38,10	13.5	17.8	7.9	15	
HELLINIKO	23,73	37,90	15.5	19.9	11.7	6	193
ELEYSINA	23,55	38,07	14.8	18.9	9.4	6	
ZAKYNTHOS	20,88	37,75	14.2	17.7	10.2	33	176
SAMOS	26,92	37,68	15.6	18.7	12.7	15	
ARGOS	22,75	37,63					
KALAMATA	22,02	37,07	13.9	19.5	8.1	33	194
NAXOS	25,37	37,10	16.3	19	13.2	4	208
METHONI	21,70	36,82					
MHLOS	24,43	36,73					
SPATA	23,95	37,95	15.2	18.9	10		
KOS	27,08	36,80	15.2	17.6	12.8	21	
KYTHIRA	22,98	36,15					
SANTORINI	25,41	36,41	14	16	11.7	4	185
SOUDA	24,12	35,55	16	20.6	12.4	15	225
RODOS	28,08	36,40	16.4	18.7	14.2	6	170
MYKONOS	25,35	37,43	15.3	17.4	13.8	7	
HRAKLEIO	25,18	35,33	16.5	20.3	12.5	8	189
IERAPETRA	25,73	35,02					
SITEIA	26,10	35,21	17	19.4	13.8	4	156
RETHYMNO	24,50	35,36					
TYMPAKI	24,76	35,06					
KASTELI	25,33	35,18	14.6	19.2	9.4	12	197
KARPATOS	27,15	35,42	16.7	18.9	14.1		
PAROS	25,13	37,02	15.6	18.3	13.1	4	176
SYROS	24,95	37,42	15.3	18	13	5	195
IKARIA	26,35	37,68					

**TABLE OF DEVIATIONS
FROM NORMAL VALUES**

STATION	TMEAN (deviation) (I)	PRECI (deviation %) (II)
SERRES		
FLORINA		
THESSALONIKI	2.6	125
ALEXANDROUPOLI	2.5	262
KOZANI	2.3	148
KERKYRA	1.7	105
IOANNINA	1.1	189
LARISA	2.7	72
LIMNOS	3.4	83
AGHIALOS	2.9	52
MYTILINI	3.8	67
AGRINIO		
SKYROS	3	35
ARGOSTOLI	1.3	50
ARAXOS	1.8	67
HIOS	3.4	27
HELLINIKO	3.1	14
ZAKYNTHOS	1.3	37
SAMOS	3.4	18
KALAMATA	1.5	46
NAXOS	3	8
METHONI		
SANTORINI	1.3	7
SOUDA	3.4	19
RODOS	2.8	8
HERAKLIO	2.9	14
SITIA	3.2	7

(I) deviation of mean temperature from normal values
 (II) deviation of monthly precipitation height from normal values %.

Climatic Bulletin

General Description

Precipitation amounts were higher enough than normals over Ipirus. In contrast they were very lower over most rest parts. The mean temperature varied higher than normal values almost everywhere.

Climatic Parameters :

- ❖ **Normal Values** : normal values for various parameters (temperature, precipitation, etc) are defined as mean values calculated for 30 years. These normal values are used as basis and represent the mean situation. They can be specified in 10 daily, monthly, seasonally and yearly level and are used for the trend comparison of 10 days, month, season or year as: rainy decameron, mild winter, cool August etc.

Measurement :

- ❖ **Precipitation**
1 mm = 1 litre/m²

Table Legend :

Tmean : Mean Temperature
 TN : Minimum Temperature
 TX : Maximum Temperature
 RR : Precipitation height(mm)
 INST : Sun Duration (hours)

UTC hours (Universal Time Coordinates) in Greece :

- ❖ Winter : UTC hour = local hour - 2
- ❖ Summer : UTC hour = local hour - 3

© Hellenic National Meteorological Service
 Reproduction is prohibited without written authorization
 14 El.Venizelou 16777
 Helliniko, Athens
 Greece