



# Climatic Bulletin

August  
2018

 **Max  
temperature**

 **Min  
temperature**

 **Mean  
temperature**

 **Precipitatio  
n**

 **Sunshine  
duration**

August characterized by normal frequency in appearance of northerly winds (known as Etesians). Meanwhile in the middle of the month and at the end local heavy rainfalls and thunderstorms caused floods with more specific cases those of events which took place in prefectures of west Crete and central Macedonia.



# Temperature

### First 10-day period

More specific (varied) :

**Minimum:**

from 12°C to 23°C over north mainland,  
 from 15°C to 26°C over central mainland,  
 from 17°C to 27°C over rest parts.

**Maximum:**

from 30°C to 36°C over north mainland,  
 from 30°C to 36°C over central mainland,  
 from 29°C to 35°C over rest parts.

### Second 10-day period

More specific (varied) :

**Minimum:**

from 11°C to 24°C over north mainland,  
 from 14°C to 27°C over central mainland,  
 from 18°C to 26°C over rest parts.

**Maximum:**

from 28°C to 37°C over north mainland,  
 from 29°C to 37°C over central mainland,  
 from 29°C to 36°C over rest parts.

### Third 10-day period

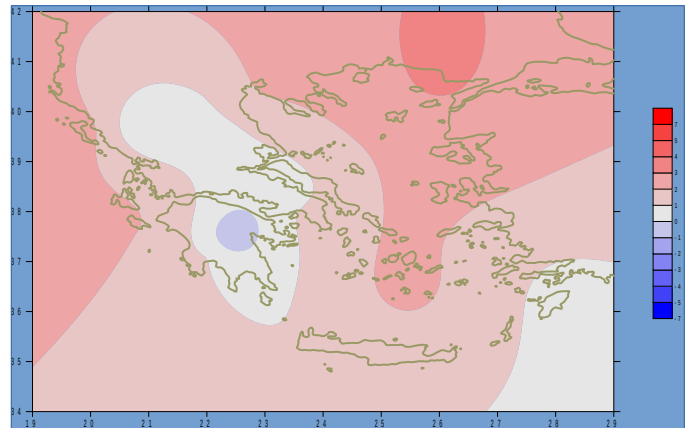
More specific (varied) :

**Minimum:**

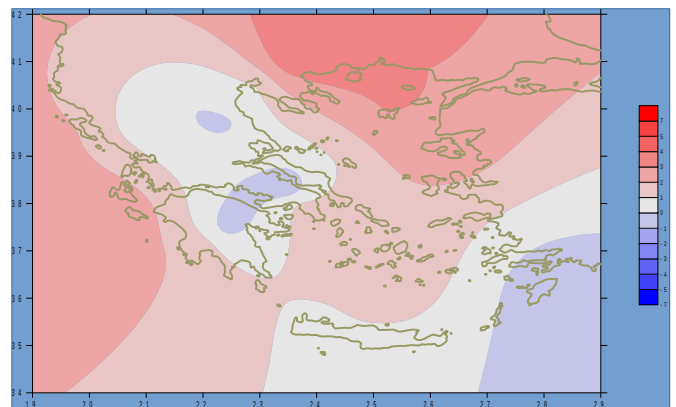
from 9°C to 23°C over north mainland,  
 From 12°C to 25°C over central mainland,  
 from 17°C to 25°C over rest parts.

**Maximum:**

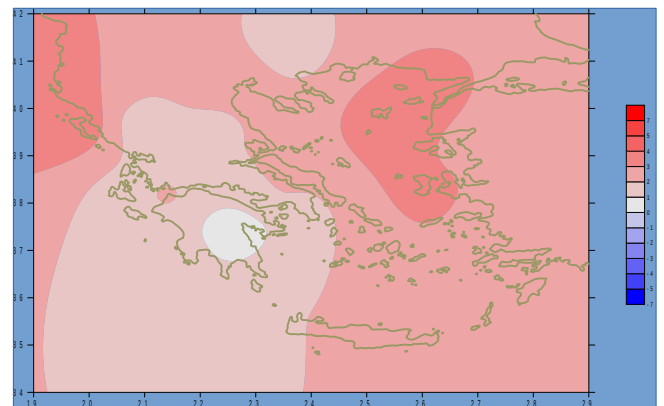
from 22°C to 37°C over north mainland,  
 from 24°C to 35°C over central mainland,  
 from 25°C to 35°C over rest parts.



**Deviation of mean temperature from normal values**



**Deviation of maximum temperature from normal values**



**Deviation of minimum temperature from normal values**



## Precipitation

### First 10-day period

Locally remarkable precipitation at the beginning.

More specific:

12mm in Serres, 18mm in Edessa, 11mm in Kozani,  
15mm in Thessaloniki, 10mm in Kastoria, 12mm in Kalamata (3/8).

### Second 10-day period

Locally remarkable precipitation in the middle of the period.

More specific:

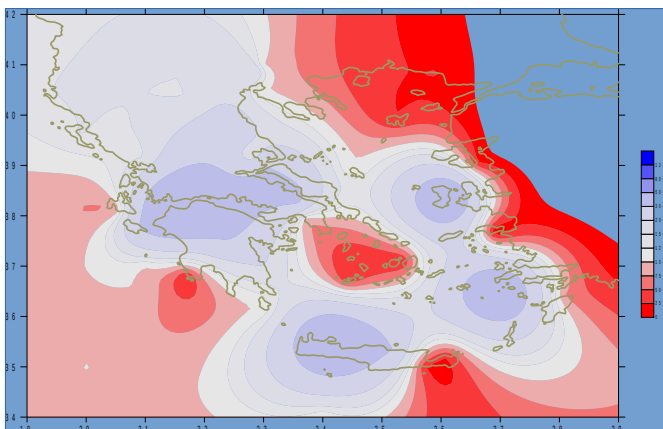
15mm in Ioannina (15/8), 3mm in Konitsa, 18mm in Preveza,  
6mm in Argostoli, 27mm in Zakynthos (16/8),  
3mm in Ioannina, 3mm in Konitsa (18/8),  
19mm in Kastoria (20/8).

### Third 10-day period

Locally remarkable precipitation

More specific:

20mm in Konitsa(24/8), 15mm in Ioannina, 8mm in Araxos (25/8),  
20mm in Kerkyra, 6mm in Kilini (26/8),  
62mm in Edessa, 39mm in Larisa, 27mm in Lamia, 32mm in  
Adravida,  
14mm in Araxos, 7mm in Tanagra, 8mm in Florina,  
17mm in Tithorea, 26mm in Fournoi, 17mm in Doxato, 11mm in  
Oreoi(27/8),  
10mm in στη Chios, 17mm in Tatoi, 66mm in Souda, 13mm in Oreoi,  
15mm in Kasteli, 22mm in Tithorea, 8mm in Psara, 6mm in Leonidio  
(28/8),  
9mm in Karistos, 11mm In Souda, 11mm in Kasteli, 5mm in Skiros,  
6mm in Oreoi (29/8), 3mm in Thessaloniki (30/8).



**Deviation of monthly  
precipitation height from normal  
values (%)**

TABLE OF MEAN VALUES

STATION	Longitude	Latitude	Tmean	TX	TN	RR	I NST
SERRES	23,53	41,07	27,4	35,1	18,5	12	310
FLORI NA	21,40	40,78					
KASTORI A	21,27	40,45	22,6	29,5	14,7	71	271
TRI KALA_I MATHI AS	22,55	40,60					
THESSALONI KI	22,97	40,52	28	32	21,2	21	324
CHRYSOUPOLI	24,62	40,92	27,6	32,3	20,1	0	340
ALEXANDROUPOLI	25,95	40,85	28,3	33,2	20,4	0	376
KOZANI	21,83	40,28	24,3	29,1	17,6	22	
KERKYRA	19,92	39,62	28,5	33	22,6	22	314
I OANNI NA	20,82	39,70	24,4	31,2	16,2	40	273
PREVEZA	20,76	38,91	27,9	33,1	22,5	29	
TRI KALA_ THESSALI AS	21,77	39,52					
LARI SA	22,45	39,65	26,9	32,3	18,7	44	287
LI MNOS	25,23	39,92	27,4	31,2	23,4	0	363
ARTA	21,00	39,17					
AGHI ALOS	22,78	39,21	26,7	31,2	20,3	18	319
MYTI LI NI	26,60	39,05	28,6	32,4	23,8	0	376
VELO	22,77	37,97					
AGRI NI O	21,35	38,60					
LAMI A	22,43	38,87					
ANDRAVI DA	21,28	37,92	26,9	32	18,9	33	359
SKYROS	24,48	38,96	26,4	28,3	24,2	9	338
ARGOSTOLI	20,50	38,12	27,8	31,5	22,3	10	361
ARAXOS	21,42	38,15	28,4	32,9	21,5	24	345
TANAGRA	23,57	38,33	27	31	20,2	38	347
HI OS	26,13	38,35	28	31,2	23,8	10	352
PYRGOS	21,42	37,67					
TRI POLI	22,40	37,52	23,2	29,5	14,9	33	302
TATOI	23,78	38,10	26,8	30,9	21	18	
HELLI NI KO	23,73	37,90	29	32,8	23,8	5	367
ELEYSI NA	23,55	38,07	29,1	33	24,1	9	
ZAKYNTHOS	20,88	37,75	28,6	33	22,6	27	370
SAMOS	26,92	37,68	29,2	33,1	24,6	0	
ARGOS	22,75	37,63					
KALAMATA	22,02	37,07	27,2	32,7	19,4	12	321
NAXOS	25,37	37,10					
METHONI	21,70	36,82					
MHLOS	24,43	36,73					
SPATA	23,95	37,95	28	31,3	22,9	7	
KOS	27,08	36,80	27	31,3	23,7	0	
KYTHI RA	22,98	36,15					
SANTORI NI	25,41	36,41	27,2	29,7	24,4	3	343
SOUDA	24,12	35,55	26,9	30,7	22,6	75	345
RODOS	28,08	36,40	27,6	29,8	25,1	0	337
MYKONOS	25,35	37,43	26	28,6	23,4	0	
HRAKLEI O	25,18	35,33	27,3	29,3	24	11	342
I ERAPETRA	25,73	35,02					
SI TEI A	26,10	35,21					
RETHYMNO	24,50	35,36					
TYMPAKI	24,76	35,06					
KASTELI	25,33	35,18	25	28,8	21,8	26	318
KARPATIOS	27,15	35,42	27	29,7	25	0	
PAROS	25,13	37,02	26,5	28,8	23,7	0	357
SYROS	24,95	37,42	26,9	29,3	24,2	0	352
I KARI A	26,35	37,68					

11,314,58,13617810,214,16,45611,314,57,89612510,713,7820210,5165,88616112,715,410,232137

**TABLE OF DEVIATIONS  
FROM NORMAL VALUES**

<b>STATION</b>	<b>TMEAN ( deviation )</b>	<b>PRECI ( deviation % )</b>
	<b>(I)</b>	<b>(II)</b>
SERRES	2.5	42
FLORI NA		
THESSALONI KI	2.2	101
ALEXANDROUPOLI	3.1	0
KOZANI	0.9	71
KERKYRA	2.4	124
I OANNI NA	0.2	141
LARI SA	0.9	284
LI MNOS	2.8	0
AGHI ALOS	0.8	97
MYTI LI NI	2.7	0
AGRI NI O		
SKYROS	16	87
ARGOSTOLI	2.1	70
ARAXOS	18	400
HI OS	2.4	5000
HELLI NI KO	14	62
ZAKYNTHOS	2	297
SAMOS	15	0
KALAMATA	1	115
NAXOS		
METHONI		
SANTORI NI	2.4	150
SOUDA	1.1	5000
RODOS	0.7	0
HERAKLI O	14	1570
SITI A		

(I) deviation of mean temperature from normal values  
 (II) deviation of monthly precipitation height from normal values  
 %.

# Climatic Bulletin

## General Description

Precipitation amounts were higher enough than normal values over lonion area, over most parts of mainland and over parts of east Aegean area. Meanwhile lack of precipitation recorded over Cyclades, over Dodecanese and over eastern Macedonia and Thrace.  
The mean temperature varied higher than normals mainly over eastern parts.

### Climatic Parameters :

- ❖ **Normal Values** : normal values for various parameters (temperature, precipitation, etc) are defined as mean values calculated for 30 years. These normal values are used as basis and represent the mean situation. They can be specified in 10 daily, monthly, seasonal and yearly level and are used for the trend comparison of 10 days, month, season or year as: rainy decameron, mild winter, cool August etc.

### Measurement :

- ❖ **Precipitation**  
1 mm = 1 litre/m<sup>2</sup>

### Table Legend :

Tmean : Mean Temperature  
 TN : Minimum Temperature  
 TX : Maximum Temperature  
 RR : Precipitation height(mm)  
 INST : Sun Duration (hours)

### UTC hours (Universal Time Coordinates) in Greece :

- ❖ Winter : UTC hour = local hour - 2
- ❖ Summer : UTC hour = local hour - 3

Hellenic National Meteorological Service  
 Reproduction is prohibited without written authorization  
 14 El.Venizelou 16777  
 Helliniko, Athens  
 Greece



Climatological  
 Division  
 M. Michelaraki  
 meteorologist

Website :  
[www.hnms.gr](http://www.hnms.gr)

