



# Climatic Bulletin

January 2011

-  Max temperature
-  Min temperature
-  Mean temperature
-  Precipitation
-  Sunshine duration



January started with a lot of raifalls mainly over Eastern Aegean and Dodecannese. Strong gale force north winds (9 locally 10 Beaufort) caused a lot of problems over Aegean area (16-17/1). Since the middle of month till a few days before the end the main weather characteristics were the rapid decrease of temperature and the snowfalls. Meanwhile floods affected Peloponnese and Crete.



## Temperature

### First Decameron

**Minimum:** low (values below  $0^{\circ}\text{C}$ ) locally over mainland.

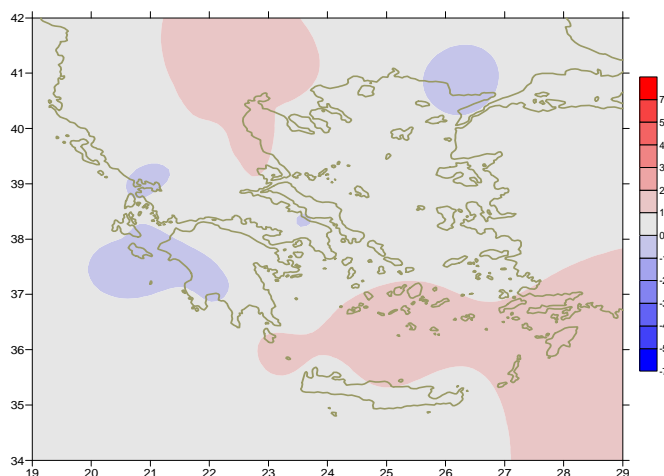
More specific:

$-5.8^{\circ}\text{C}$  in Kastoria and  $-3.4^{\circ}\text{C}$  in Alexandroupoli during first days,  $-5^{\circ}\text{C}$  in Ioannina and  $-2.2^{\circ}\text{C}$  in Tripoli at 7/1.

**Maximum:** Relatively low values which increased later.

More specific:

$-1^{\circ}\text{C}$  in Kozani,  $2.8^{\circ}\text{C}$  in Serres at 4/1 but  $13.6^{\circ}\text{C}$  in Kozani,  $1^{\circ}\text{C}$  in Serres at 9/1.



*Deviation of mean temperature from normal values*

### Second Decameron

**Minimum:** The values decreased rapidly over eastern, southern parts from 16/1 and over NW mainland from 18/1.

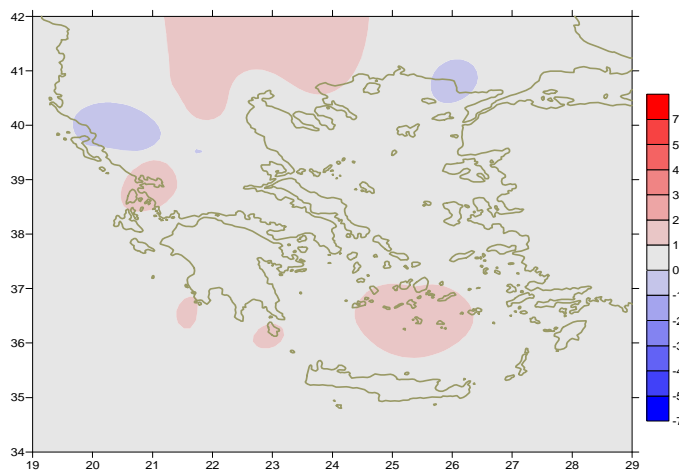
More specific:( from the lowest)

$0.6^{\circ}\text{C}$  in Thessaloniki,  $-1.2^{\circ}\text{C}$  in Larisa at 18/1 and  $-4^{\circ}\text{C}$  in Kastoria at 19/1.

**Maximum:** high values over west mainland.

More specific: )

$19.2^{\circ}\text{C}$  in Kalamata,  $17.4^{\circ}\text{C}$  in Agrinio at 16/1 and  $18^{\circ}\text{C}$  in Arta at 18/1.



*Deviation of maximum temperature from normal values*

### Third Decameron

**Minimum:** the values decreased between 25-28/1.

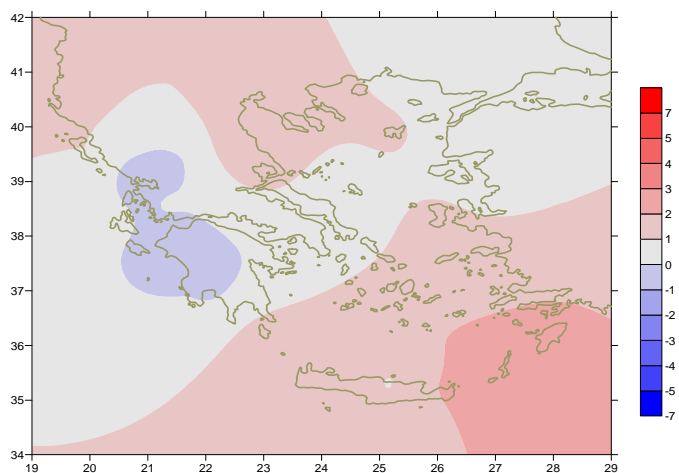
More specific:

$-13.8^{\circ}\text{C}$  in Florina,  $-6^{\circ}\text{C}$  in Tripoli at 26/1 and  $-5.6^{\circ}\text{C}$  in Larisa,  $-5.8^{\circ}\text{C}$  in Serres at 27/1.

**Maximum:** total frost (the temperature did not exceed  $0^{\circ}\text{C}$  during night and day) locally over Northwestern mainland (25-26-27/1).

For example:

Max temperature in Florina:  $-2.8^{\circ}\text{C}$  at 25/1,  $-3.4^{\circ}\text{C}$  at 26/1 and  $-1^{\circ}\text{C}$  at 27/1.



*Deviation of minimum temperature from normal values*



## Precipitation

### First Decameron

High precipitation recorded

Over eastern Aegean at the beginning .

More specific:

*50mm in Mytilini ,*

*49mm in Samos and 76mm in Icaria at 3/1.*

### Second Decameron

very strong rainfalls and thunderstorms recorded over

Dodecanese while over Aegean and Crete the precipitation was high .

More specific:

*68mm in Rodos at 13/1,*

*43mm in Kos at 13/1,*

*326m in Sitia at 14/1, 29mm in Karpathos at 15/1.*

### Third Decameron

Relatively high precipitation (mainly snowfalls)

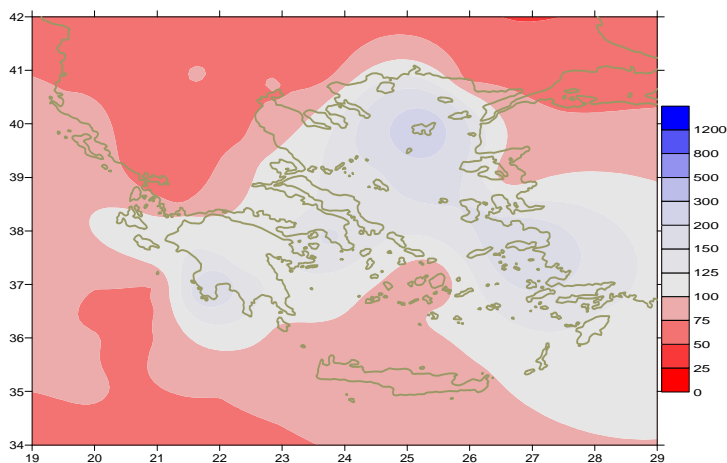
recorded.

More specific:

*81mm in Chios at 22/1,*

*60mm in Samos at 28/1 and*

*114mm in Kalamata at 28/1.*



*Deviation of monthly precipitation height from normal values (%)*

## TABLE OF MEAN VALUES

STATION	Longitude	Latitude	Tmean	TX	TN	RR	INST
SERRES	23,53	41,07	5	9,6	1,1	18	60
FLORINA	21,40	40,78					
KASTORIA	21,27	40,45	3,2	7,8	-1,4	21	95
TRIKALA_IMATHIAS	22,55	40,60	5,8	10,9	1,8	26	118
THESSALONIKI	22,97	40,52	6	9,2	2,8	27	116
CHRYSOUPOLI	24,62	40,92	6,2	9,6	3	45	113
ALEXANDROUPOLI	25,95	40,85	4,6	8,2	1,3	42	140
KOZANI	21,83	40,28	3,1	7,1	-0,3	24	
KERKYRA	19,92	39,62	9,9	13,9	6,1	128	117
IOANNINA	20,82	39,70	5,2	9,7	0,8	66	82
PREVEZA	20,76	38,91	10	13,9	7	83	
TRIKALA_THESSALIAS	21,77	39,52	5,6	10	1,9	52	
LARISA	22,45	39,65	6,2	10,4	2,1	23	97
LIMNOS	25,23	39,92	7,8	10,8	5,4	190	130
ARTA	21,00	39,17	8,4	15,2	3,7	74	128
AGHIALOS	22,78	39,21	7,5	11,7	4,1	52	112
MYTILINI	26,60	39,05	9,6	12,9	6,8	106	147
VELO	22,77	37,97	10	13,7	6,3	58	125
AGRINIO	21,35	38,60	8,6	14,5	3,6	81	136
LAMIA	22,43	38,87	7,8	12,4	3,7	36	106
ANDRAVIDA	21,28	37,92	10,1	14,8	5,8	114	147
SKYROS	24,48	38,96	10	12,5	7,8	107	84
ARGOSTOLI	20,50	38,12	11,7	15,2	9	133	168
ARAXOS	21,42	38,15	10,2	14,4	5,8	107	155
TANAGRA	23,57	38,33	7,4	11,9	3,9	82	104
HIOS	26,13	38,35	10	13,1	7,4	179	133
PYRGOS	21,42	37,67	10,9	15,5	6,2	120	100
TRIPOLI	22,40	37,52	5,3	10,1	0,7	122	125
TATOI	23,78	38,10	8,1	11,8	5	63	
HELLINIKO	23,73	37,90	10,5	14	7,3	72	111
ELEYSINA	23,55	38,07	9,6	13,3	6,6	64	
ZAKYNTHOS	20,88	37,75	10,8	14,7	7,7	176	155
SAMOS	26,92	37,68	10,8	13,7	8,3	286	166
ARGOS	22,75	37,63					
KALAMATA	22,02	37,07	9,8	15,2	5,2	188	154
NAXOS	25,37	37,10	13,1	15,2	10,6	52	119
METHONI	21,70	36,82	11,7	15,7	7,9	201	182
MHLOS	24,43	36,73					
SPATA	23,95	37,95	8,9	12,9	4,6	74	
KOS	27,08	36,80	11,6	14	9,5	192	
KYTHIRA	22,98	36,15					
SANTORINI	25,41	36,41	12,9	15,3	11,1	67	181
SOUDA	24,12	35,55	11,7	14,8	9,2	135	124
RODOS	28,08	36,40	13,3	15,8	10,8	182	170
MYKONOS	25,35	37,43	11,1	13,2	9,6	83	
HERAKLEIO	25,18	35,33	13	15,7	9,9	72	123
IERAPETRA	25,73	35,02					
SITEIA	26,10	35,21	13	14,8	11,5	87	134
RETHYMNO	24,50	35,36					
TYMPAKI	24,76	35,06	12,6	17	8,4	81	183
KASTELI	25,33	35,18	10,1	13,6	7,1	115	144
KARPATOS	27,15	35,42	14	16,2	12,6	121	
PAROS	25,13	37,02	11,9	14,5	10,1	75	156
SYROS	24,95	37,42	12	14	9,4	86	157
IKARIA	26,35	37,68	11,9	13,8	10,2	197	

# Climatic Bulletin

## General Description

Precipitation amounts were lower than normal values over most parts of Central and Northern mainland, normal over rest parts with the exception of Aegean area and Peloponnese where the amounts were quite higher.

The mean temperature varied higher than normal values over South Aegean area and Central Macedonia.

### Climatic Parameters :

- ❖ **Normal Values** : normal values for various parameters (temperature, precipitation, etc) are defined as mean values calculated for 30 years. These normal values are used as basis and represent the mean situation. They can be specified in 10 daily, monthly, seasonally and yearly level and are used for the trend comparison of 10 days, month, season or year as: rainy decameron, mild winter, cool August etc.

### Measurement :

- ❖ **Precipitation**  
1 mm = 1 litre/m<sup>2</sup>

### Table Legend :

Tmean : Mean Temperature  
 TN : Minimum Temperature  
 TX : Maximum Temperature  
 RR : Precipitation height(mm)  
 INST : Sun Duration (hours)

### UTC hours (Universal Time Coordinates) in Greece :

- ❖ Winter : UTC hour = local hour - 2
- ❖ Summer : UTC hour = local hour - 3

© Hellenic National Meteorological Service  
 Reproduction is prohibited without written authorization  
 14 El.Venizelou 16777  
 Helliniko, Athens  
 Greece